

Blue Prism Trial and Blue Prism Learning Edition

We offer two alternative versions of our SS&C | Blue Prism® Enterprise product to help you become familiar with Blue Prism and, if you are looking for a more structured approach, start teaching yourself how to use Blue Prism with support from our training labs and Blue Prism University.

Blue Prism Trial

Find out how easy it is to automate your organization's internal processes and discover how Blue Prism can improve efficiency and productivity throughout your business.

What's included...

- A standalone installation of Blue Prism, including a database.
- A fully-functional 30-day license.
- 15 processes to run the operations you want to automate.

Learning Edition

Begin your Robotic Process Automation (RPA) journey with Learning Edition, and discover new opportunities by becoming a certified Blue Prism developer through the Blue Prism University.

What's included...

- A standalone installation of Blue Prism, including a database.
- A feature-limited* 180-day license.
- 5 processes to run the operations you want to automate.

The license differentiates the two versions. Both versions install the same software and come with a single digital worker so you can run your automated processes against target applications. To support you, we provide free access to our product documentation, training materials, and the Blue Prism community – click [here](#) for details.



* The Blue Prism Learning Edition contains all the development capabilities of the Enterprise Edition, however the Learning Edition restricts the product's functionality in the following areas:

- **Blue Prism application server** – The service and executable will still be installed, and the option to select **Blue Prism Server** as the connection type is available in the Connection Configuration dialog, however the license prevents the Blue Prism Server service from starting.
- **Scheduler** – The Scheduler is disabled. This prevents the ability to autonomously coordinate the Blue Prism digital workers.

Users cannot upgrade from the Learning Edition to an Enterprise Edition directly, but must uninstall the Learning Edition and subsequently install the Enterprise Edition.

Before you start...

Ensure your device meets the minimum requirements

For details on the minimum requirements, see [Standalone installation hardware requirements](#).

Downloads, licenses, and versions

Downloads and licenses

The software for Blue Prism Trial and Blue Prism Learning Edition is available to download from the Blue Prism Product Portal. To do this, you need a portal account...

I already have a portal account

Go straight to the required download page, logging in when prompted:

- Trial
- Learning

Click the download button to download your chosen version. This automatically initiates the license generation process. Your license will be emailed to you – make sure you save it somewhere safe!

I do not have a portal account

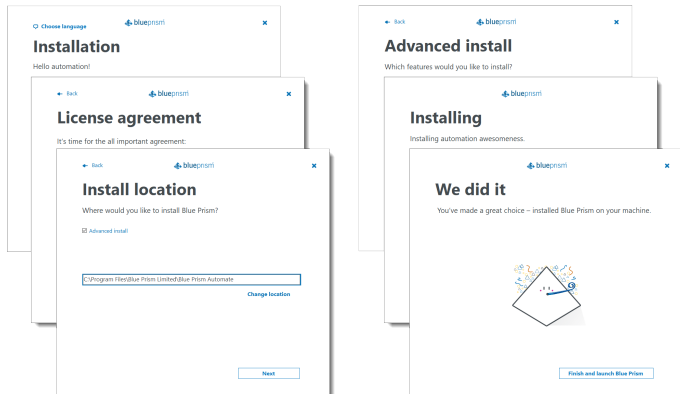
1. Go to the portal	2. Register	3. Download
Select the required version: <ul style="list-style-type: none"> • Trial • Learning 	You are asked to create an account on our product portal. You need this to download and license the software. When you have registered, you will be sent an email confirmation allowing you to complete the process.	When you've logged in, click the download button on the product page to start downloading your chosen version. This automatically initiates the license generation process. Your license will be emailed to you - save it somewhere safe!

Install and activate

This topic shows you how to install and activate Blue Prism Trial and Blue Prism Learning Edition. You can also watch a [video](#) of an installation of the Learning Edition.

Install

Double-click the installer and follow the instructions to install Blue Prism.




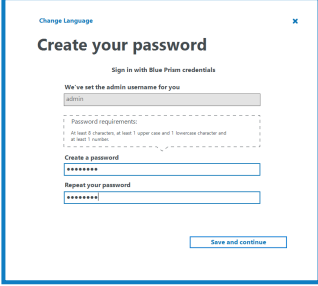
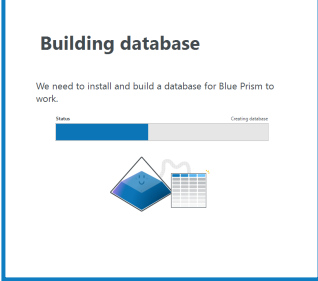
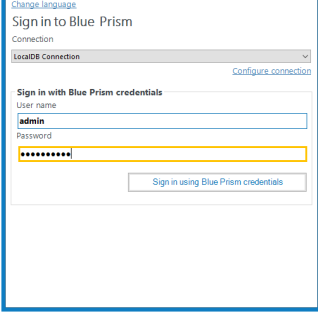
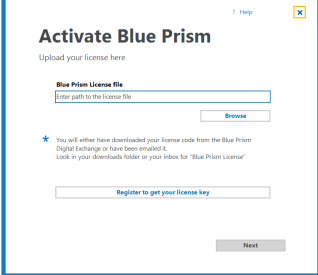
As part of the installation process, you are asked which Blue Prism components you want to install. Select the components you require for the processes you want to automate – if in doubt, select them all:

- **Outlook automation** – Enable this option if you want to automate processes that use Outlook.
- **Citrix automation** – Enable this option on interactive clients used to build Citrix automation processes, and on the runtime resources used to run those processes. This option is only available if Citrix Workspace has been installed on the device.
- **Chrome browser extension** – Enable this option if you want to automate processes that use web pages presented in Chrome.
- **Edge browser extension** – Enable this option if you want to automate processes that use web pages presented in Chromium versions of Edge.
- **Citrix Virtual Desktops agent** – Enable this option to install the Citrix Virtual Desktops agent in your Citrix Virtual Desktops Environment (VDE).
- **Citrix Virtual Apps agent** – Enable this option to install the Citrix Virtual Apps agent on your Citrix Virtual Apps server.

Once installation is complete, launch Blue Prism.

Activate

Once installation is complete, run Blue Prism to activate the software. The key steps are outlined below.

<h3>Create an administrator account</h3> <p>The first time you open Blue Prism, you are asked to create an admin account so you can configure and administrate Blue Prism.</p> <p>The username is automatically set as admin – enter and confirm your admin password.</p> <div style="border: 1px solid #0070C0; padding: 5px; margin-top: 10px;"> <p> These credentials are for the Blue Prism software and are different from those required for the product portal.</p> </div>	
<h3>Install a local database</h3> <p>Blue Prism requires a database to store processes, logs, auditing data, and user information. The database is automatically created for you.</p>	
<h3>Sign in</h3> <p>Sign in to Blue Prism with the username admin and the password you entered when you set up the account.</p>	
<h3>Activate Blue Prism</h3> <p>You are prompted to upload your license file. This is the file that was emailed to you after you downloaded the software.</p> <p>Click Browse and select your license file. You will be notified when the license has been successfully activated.</p>	

Once fully installed and activated, a quick guide displays to help you get familiar with the different areas of the product.

You're now ready to start using Blue Prism!

Resources

A wide range of learning and support material is available for the Trial and Learning users – start with the training labs or jump straight into the developer training.

Resource	Location	Recommended for
Documentation	bpdocs.blueprism.com	All users
Training labs	Blue Prism Digital Exchange (DX)	Trial users
Developer training	Blue Prism University	Learning Edition users

You also have access to a further resources that will help you get up and running and support you as you progress:

- [Blue Prism Portal](#) – Access our product documentation and support center.
- [Blue Prism Community Site](#) – Discuss Blue Prism with other users, ask questions, and give feedback. There are separate communities for [Trial](#) and [Learning](#) versions.

Next steps

Now you have had a chance to use Blue Prism and see what it can offer your organization, you are now ready to move to the Enterprise Edition and use Blue Prism to automate and enhance your internal processes.

Talk to your sales representative about your Enterprise options.

Uninstall

You can simply uninstall Blue Prism using the Windows *Add or remove programs* system settings. To completely remove all Blue Prism components from your device, follow the additional steps below.

Remove the local database instance

Open the command line and run the following commands to stop and remove the local database instance:

```
"C:\Program Files\Microsoft SQL Server\140\Tools\Binn\sqllocaldb.exe" stop blueprismlocaldb
```

```
"C:\Program Files\Microsoft SQL Server\140\Tools\Binn\sqllocaldb.exe" delete blueprismlocaldb
```

Remove the configuration files

Open Windows Explorer and remove the following configuration folders:

- C:\Users\[username]\AppData\Local\Blue Prism Limited
- C:\Users\[username]\AppData\Roaming\Blue Prism Limited
- C:\Users\[username]\AppData\Local\Microsoft\Microsoft SQL Server Local DB\Instances\BluePrismLocalDB
- C:\ProgramData\Blue Prism Limited

Remove Microsoft SQL Server 2017 LocalDB

SQL Server 2017 LocalDB is installed and set up during the Blue Prism Trial and Learning Edition setup. If this is not used for any other purpose and is no longer required, you can uninstall using the Windows *Add or remove programs*.