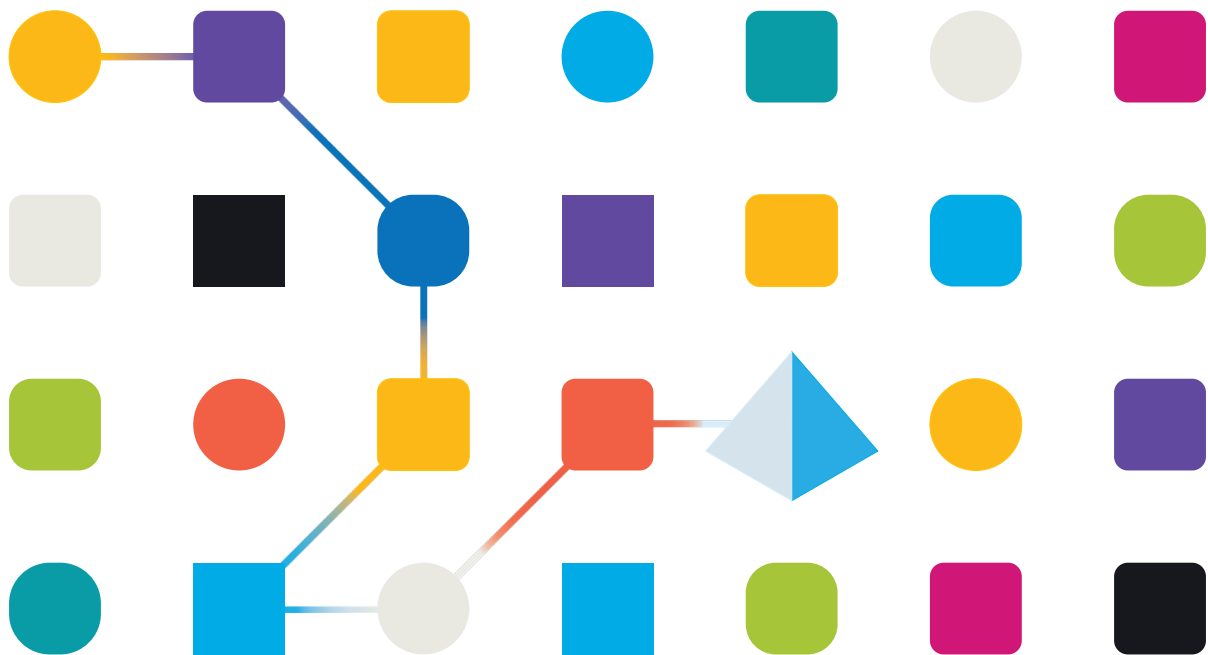




Blue Prism Mainframe Guide

Using the Blue Prism Mainframe

Document Revision 1.0



Trademarks and copyright

The information contained in this document is the proprietary and confidential information of Blue Prism Limited and should not be disclosed to a third party without the written consent of an authorised Blue Prism representative. No part of this document may be reproduced or transmitted in any form or by any means, electronic or mechanical, including photocopying without the written permission of Blue Prism Limited.

© **Blue Prism Limited, 2001 – 2022**

© “Blue Prism”, the “Blue Prism” logo and Prism device are either trademarks or registered trademarks of Blue Prism Limited and its affiliates. All Rights Reserved.

All trademarks are hereby acknowledged and are used to the benefit of their respective owners.
Blue Prism is not responsible for the content of external websites referenced by this document.

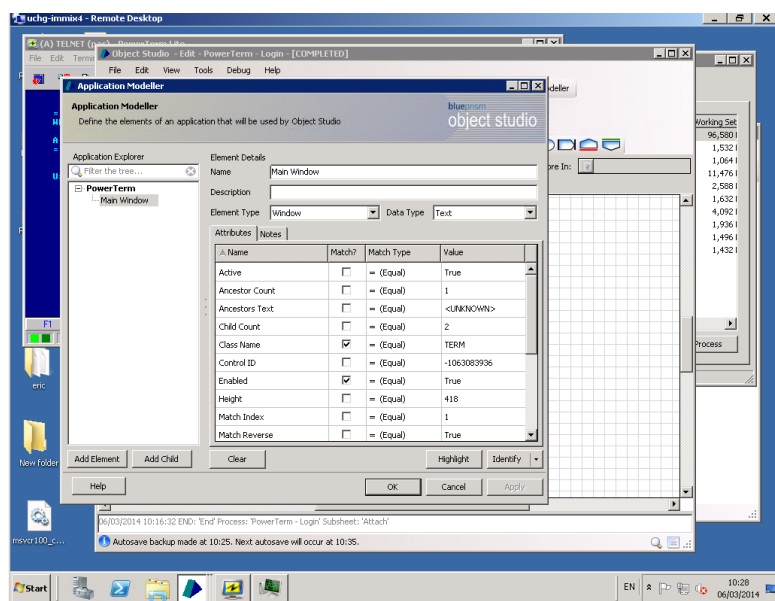
Blue Prism Limited, 2 Cinnamon Park, Crab Lane, Warrington, WA2 0XP, United Kingdom
Registered in England: Reg. No. 4260035. Tel: +44 370 879 3000. Web: www.blueprism.com

Using the Blue Prism Mainframe

Overview

Blue Prism provides a grid tool to allow you to quickly spy regions on a mainframe screen. Once you have correctly configured your mainframe object to start the mainframe the following instructions describe how to use the mainframe spying tool.

- Start the mainframe session (use the launch action or start manually and call the attach action)
- Within Application Modeller and you will see the application is now attached and the “launch” button is not available



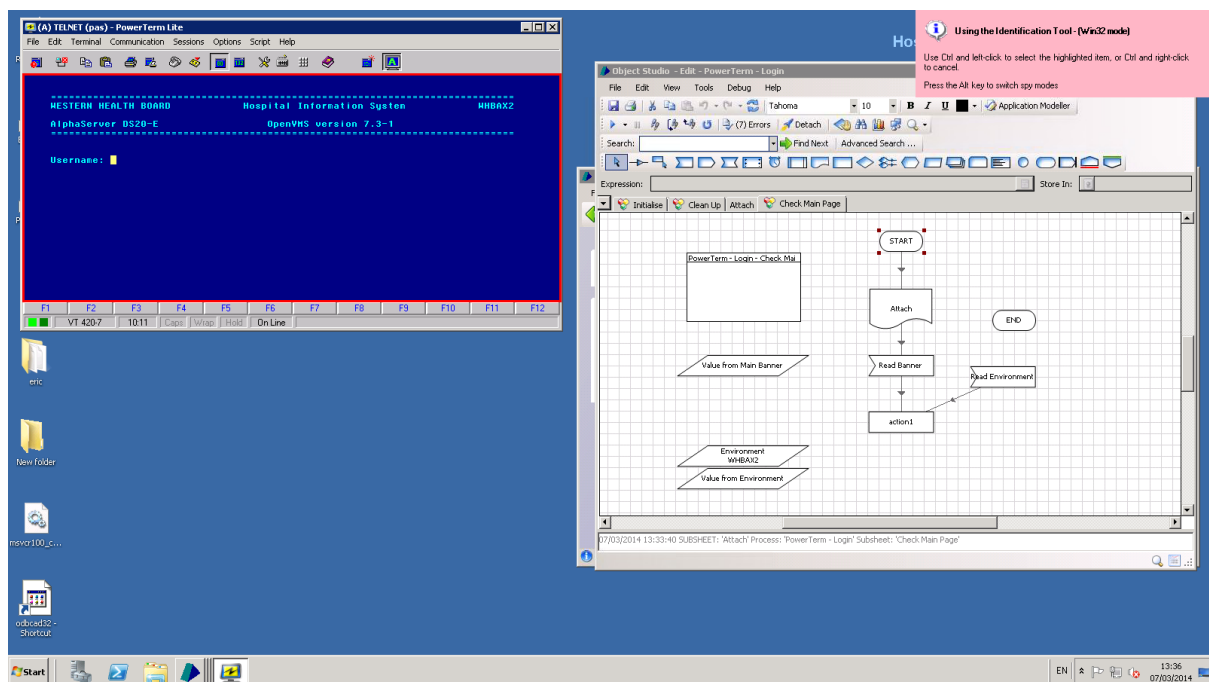
PowerTerm

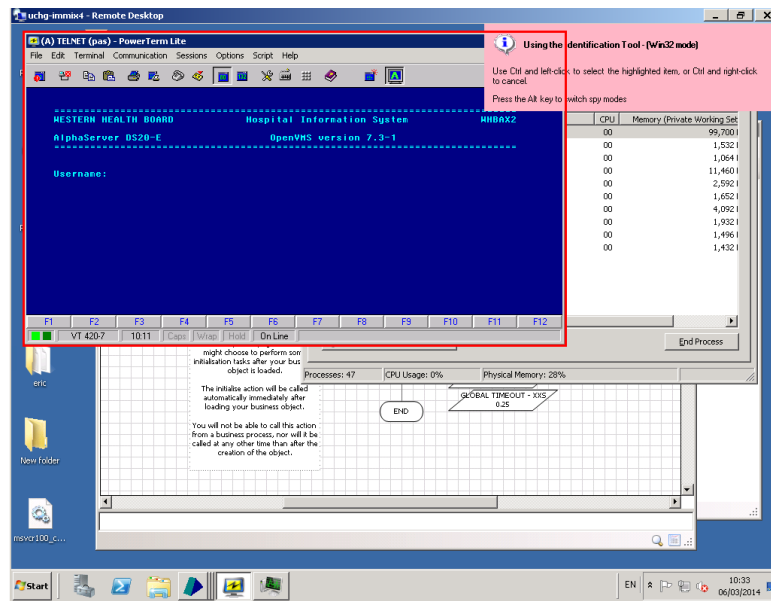
You cannot start PowerTerm from the PowerTerm object. The session has to be started from a separate object which starts the Windows process. Once the PowerTerm session is running either from a separate Blue Prism object or from being started manually call the Launch action from your PowerTerm object and the object will attach to the session.

- Go back to your application modeller and create a main window element and then select identify

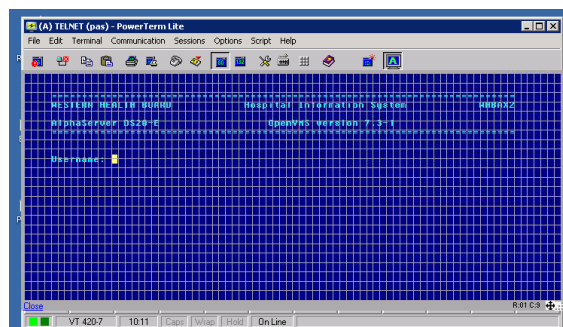
Spying Elements Correctly

- You have to spy the application window in Win32
 - TIP: remember do not spy the whole of the window**
 - Do not spy the toolbars or bottom information**
 - For Integration mode to work successfully by using the grid you must ensure you only spy the application window**
 - Please see screenshot below**

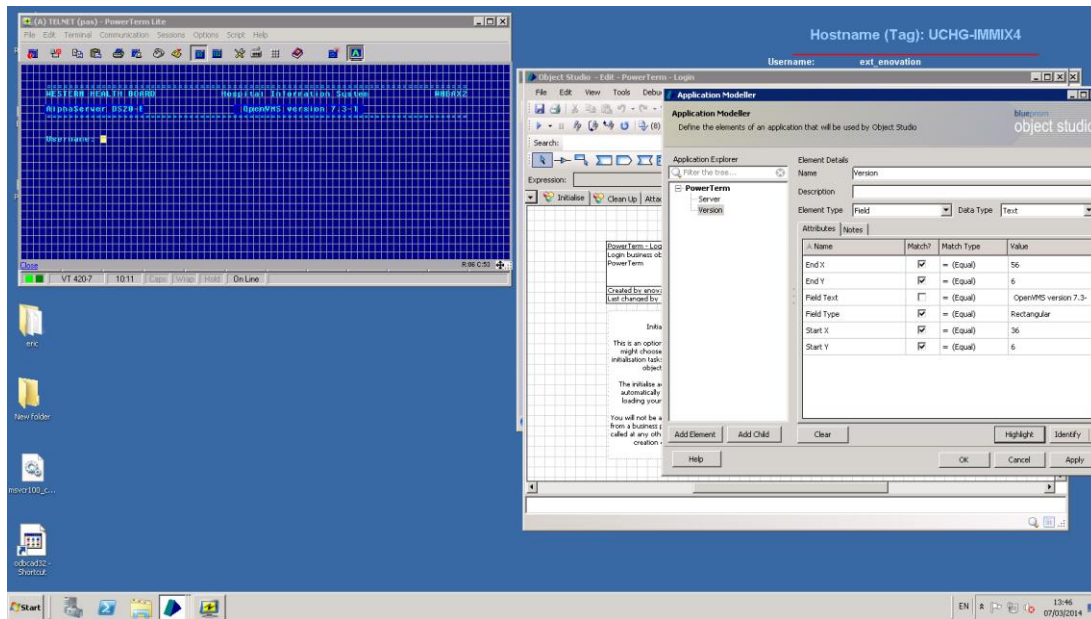




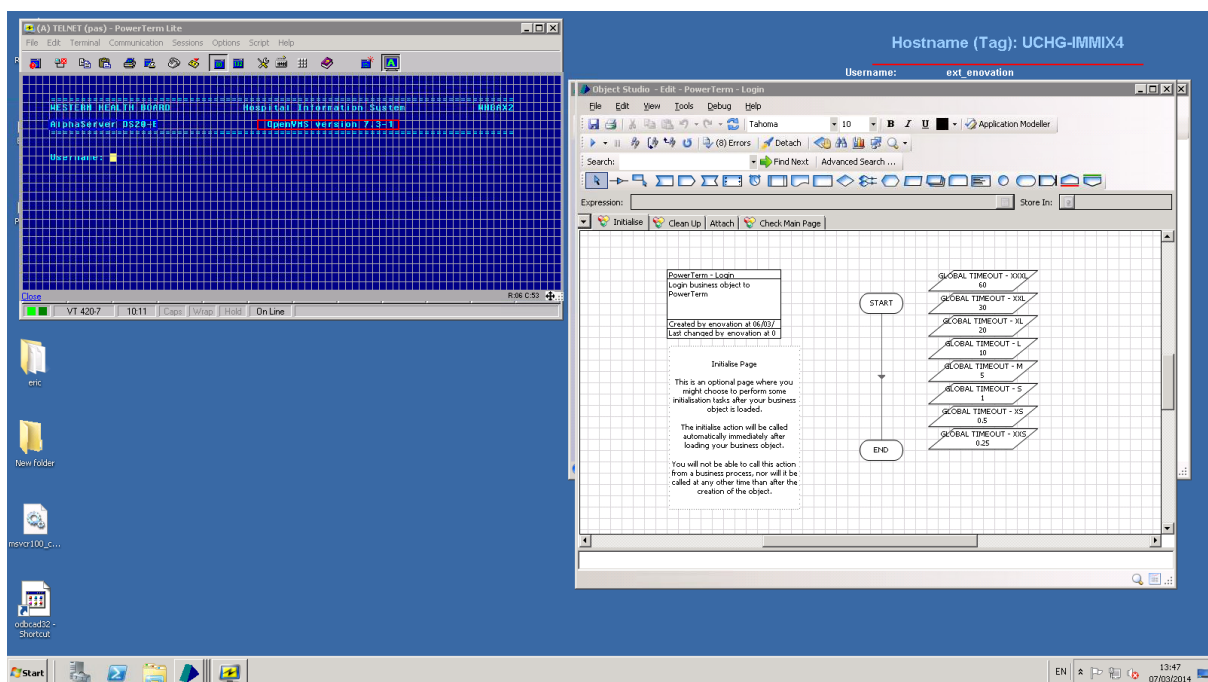
- Select Ctrl + Left click and then the spy grid will appear



- It is important to see where the grid is on this application now, it does not cover the toolbar or any window elements at all. If it does you can resize the tool to make it smaller or bigger in any direction.
- You can then create your elements required.
- Remember when selecting your elements for input fields you select what you consider to be the *whole* field rather than just selecting the data currently in the field. The current data may not occupy the full width of the field.



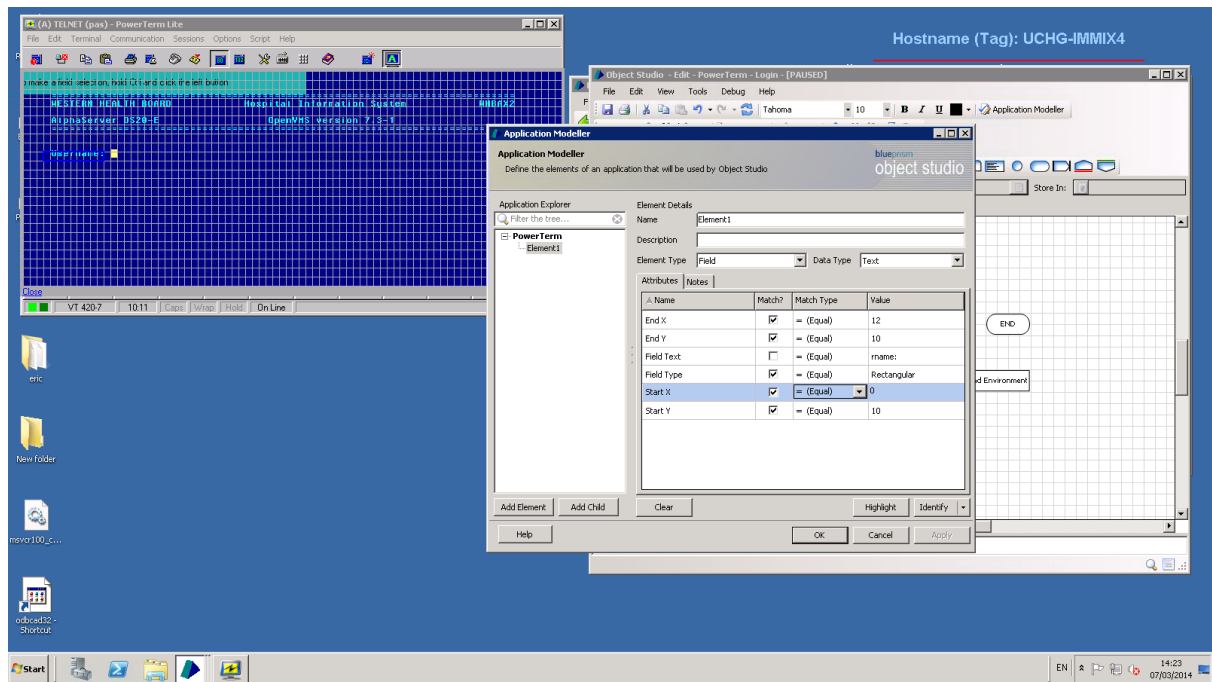
- Highlight them to confirm



Further help

You might find sometimes the text does not come back properly for the field you have highlighted on the application screen:

Look at the below element identified



Only part of username has appeared. By changing the Start X from 4 to 0, in the read stage the username field is read back properly

