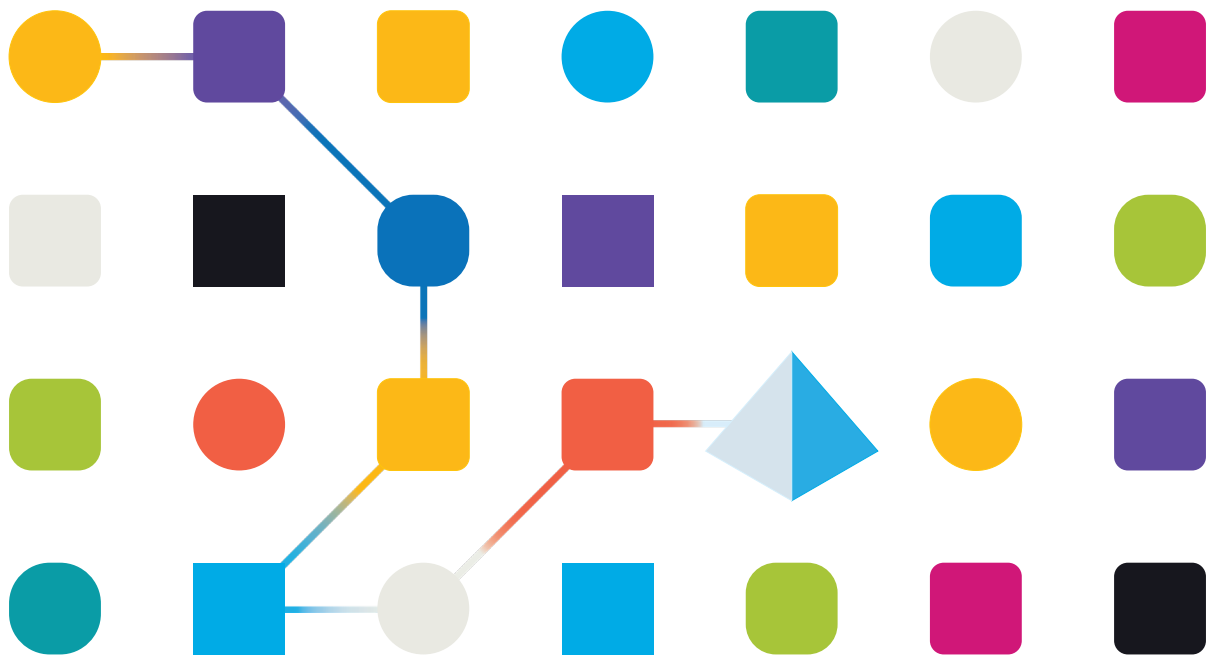




Blue Prism Mainframe Guide

Micro Focus Reflection

Document Revision 1.0



Trademarks and copyright

The information contained in this document is the proprietary and confidential information of Blue Prism Limited and should not be disclosed to a third party without the written consent of an authorised Blue Prism representative. No part of this document may be reproduced or transmitted in any form or by any means, electronic or mechanical, including photocopying without the written permission of Blue Prism Limited.

© **Blue Prism Limited, 2001 – 2022**

© “Blue Prism”, the “Blue Prism” logo and Prism device are either trademarks or registered trademarks of Blue Prism Limited and its affiliates. All Rights Reserved.

All trademarks are hereby acknowledged and are used to the benefit of their respective owners.
Blue Prism is not responsible for the content of external websites referenced by this document.

Blue Prism Limited, 2 Cinnamon Park, Crab Lane, Warrington, WA2 0XP, United Kingdom
Registered in England: Reg. No. 4260035. Tel: +44 370 879 3000. Web: www.blueprism.com

How to configure Micro Focus Reflection for use with Blue Prism

Introduction

Micro Focus produce a number of emulator products for emulating and connecting to mainframe sessions. Blue Prism supports the use of several variants of Micro Focus's products for mainframe connectivity. In this guide document we will be describing the use of the **Reflection for Desktop** tool, when it is configured to connect to a UNIX or OpenVMS, or an IBM-compatible mainframe session.

The version of the Micro Focus product used in this guide is Reflection for Desktop 16 (using .NET API) or Reflection 9.x (using legacy COM API). The Blue Prism software used is v5.0.18.

Blue Prism's Reflection mainframe connector uses either the Micro Focus **Legacy COM API interface** or the current **.NET API** interface used by more recent versions of the product. The legacy COM API was supported primarily in Reflection versions prior to v14.1. Versions above that converted to using the .NET API.

See the [Micro Focus web site](#) for more information.

Pre-Requisites

Before following these instructions you will need the following:-

- a) Blue Prism software installed
- b) Micro Focus Reflection for Desktop software installed
- c) A valid running mainframe session to connect to (*not the demo sessions provided as examples by Micro Focus*)
- d) An Micro Focus session file created which can connect to your running mainframe system

Supported File Types

- **R2W**: OpenSystems Legacy sessions for UNIX and OpenVMS mainframes (COM API)
- **R3DX**: IBM-compatible terminal sessions (.NET API)

NOTES:

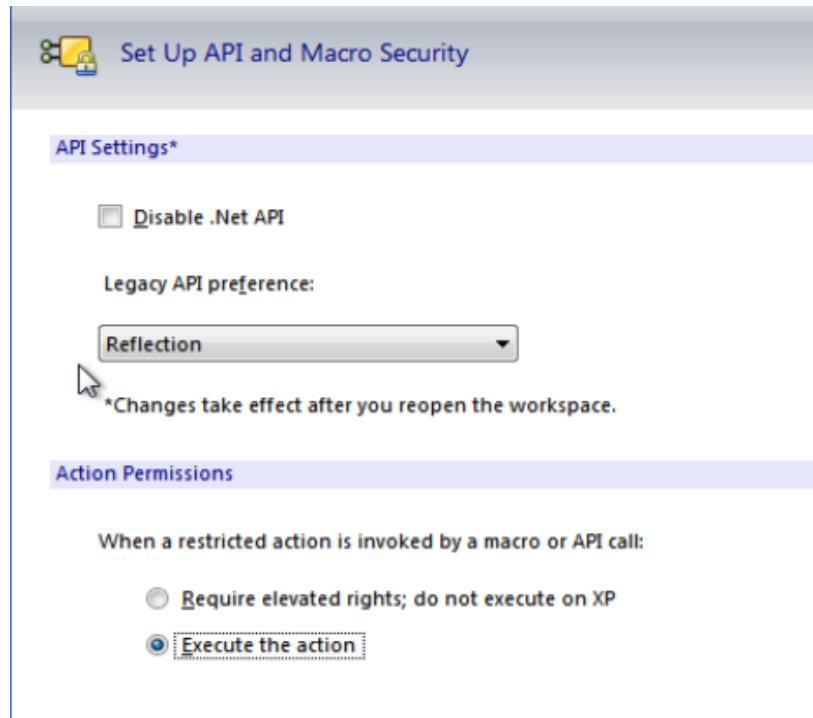
1. **RFW**: This file type is listed, but not supported. It will be removed in future software releases.
2. **R3DX** files are only supported from Blue Prism version 5.0.13 onwards.

Configuring Micro Focus Reflection options

The following installation and configuration options are required to support the Blue Prism mainframe connection:-

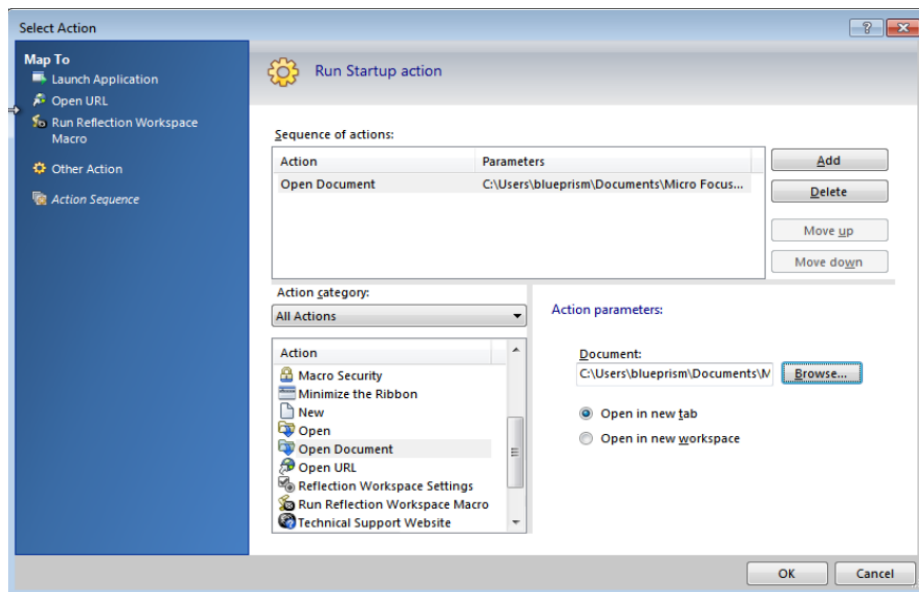
TRUST CENTER

- Set up API compatibility

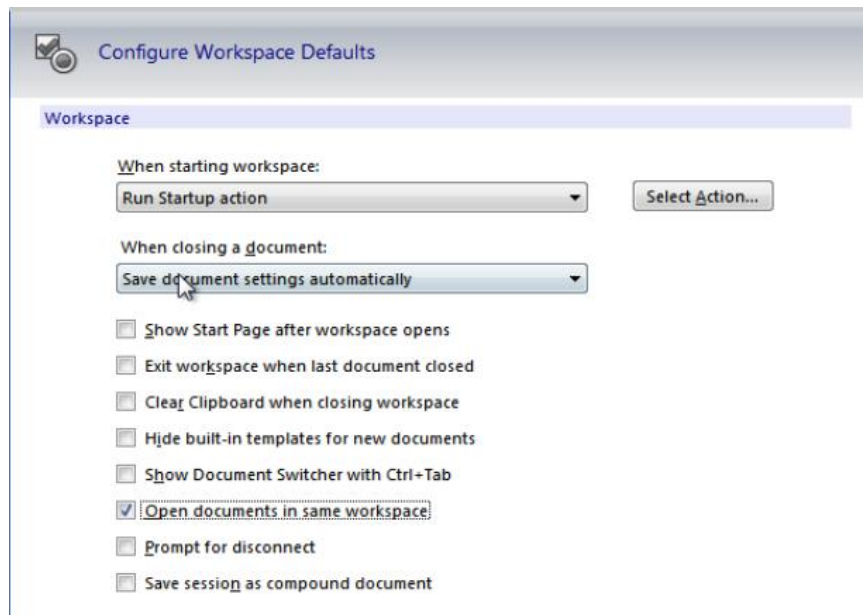


WORKSPACE SETTINGS

- Set the startup action to open your Session file



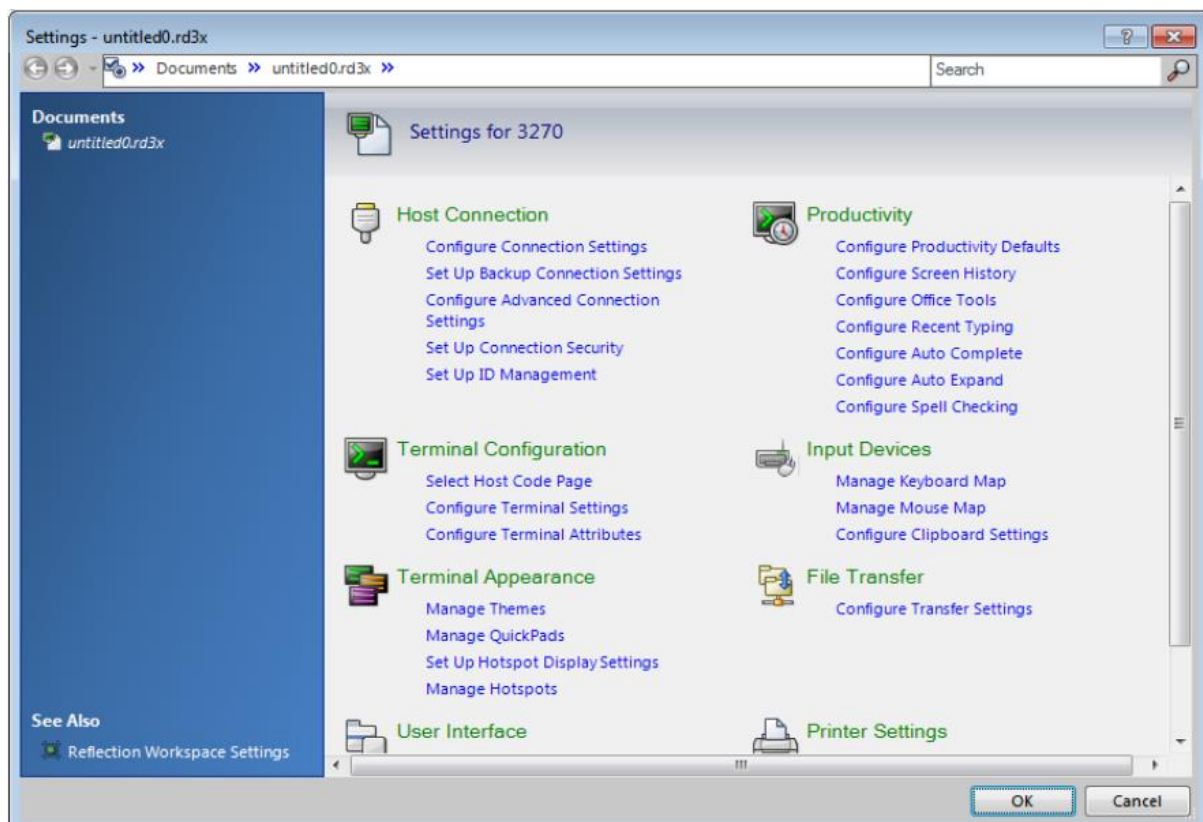
- Uncheck "Show Start Page after workspace opens" option



Configuring Micro Focus to run a specific session

The following steps can be followed to configure Micro Focus to run a pre-defined session file:-

1. Run the Micro Focus Reflection Program
2. If prompted, then select to **open a session file**, and browse to your existing REFLECTION Session file (*.r2w)
3. Select the **Configure Connection Settings** option from the **Host Connection** settings screen



4. Select the **Advanced** Connection Settings link to reveal information about the **HLLAPI Shortname** configuration options.

Configure Advanced Connection Settings

Keep Alive

☐ Send Keep Alive packets:

System

Keep Alive timeout in seconds:

600

Telnet Location

Telnet location:

HLLAPI

Options

Short name: Long name:

Compatibility: Custom compatibility mask:

EXTRA!

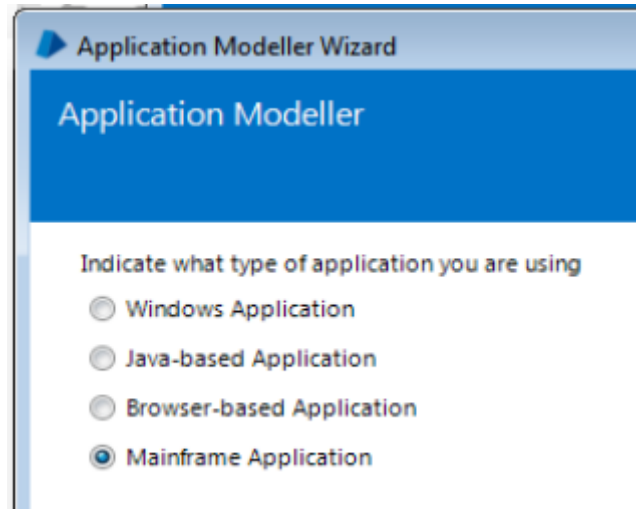
5. Select a **Session Shortname** letter and browse to locate the Reflection Session file (*.rd3x or *.r2w) that you want to associate with this shortname identifier .
 - This character code will be used by Blue Prism’s Application Modeller to identify the associated session, and will be called a “**Session Identifier**” in Blue Prism.
6. Click the **OK** button to set this configuration, and then exit from the Micro Focus Reflection Session, ensuring that the session and the emulator are both closed.

Configuring Blue Prism to run the Reflection for Desktop 16 session

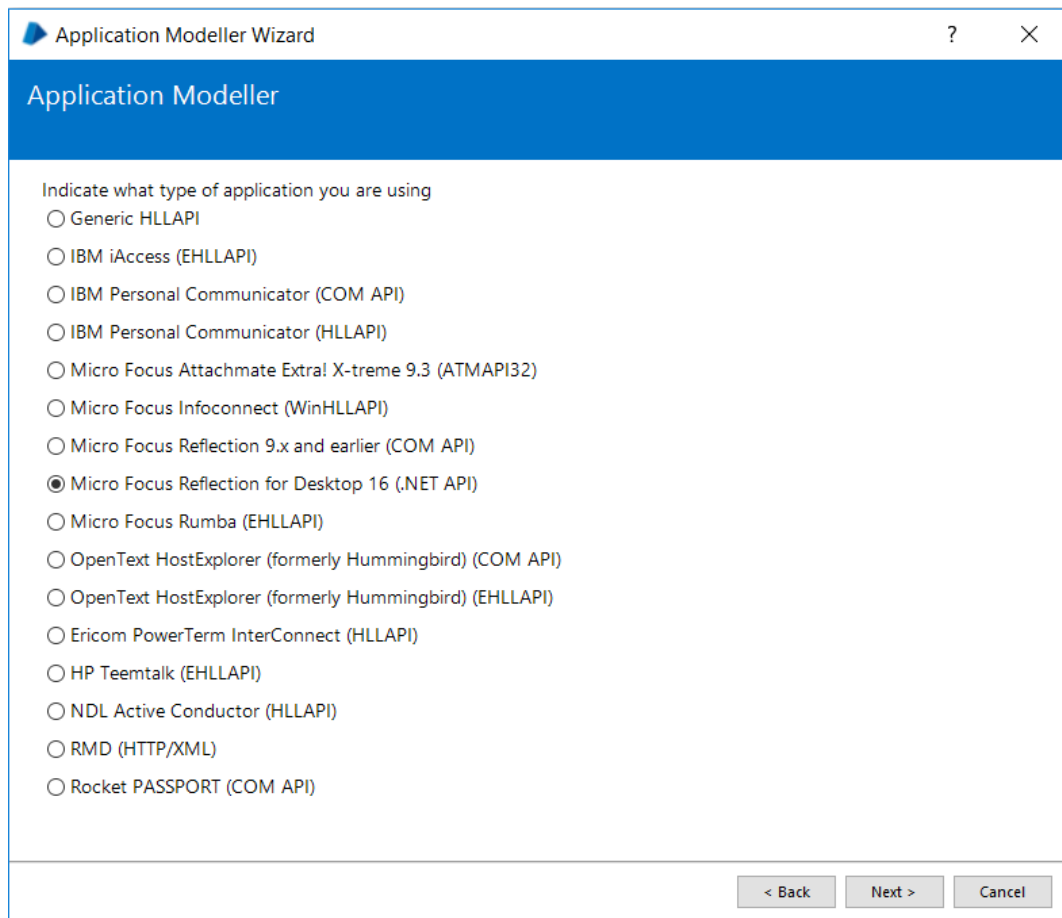
This section will describe the way to configure a Business Object to launch and attach to a Reflection for Desktop 16 emulator session.

Once Micro Focus has been configured to associate the session file with a specific session shortname, then Blue Prism can be configured to Launch and Attach to the same session.

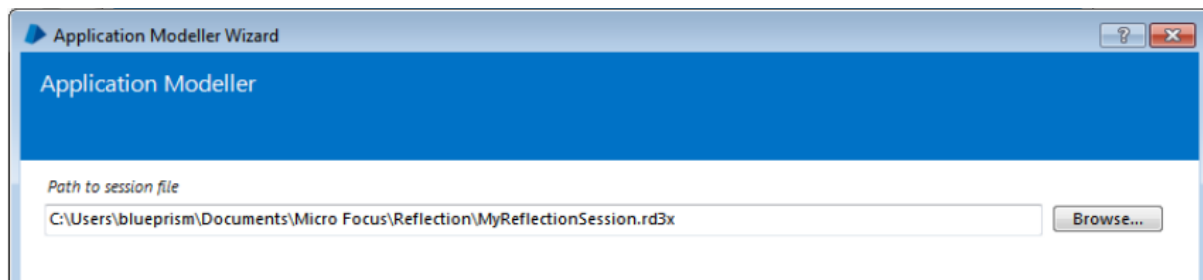
1. Run the Blue Prism client software.
2. Using Object Studio create a new Business Object with the following configuration:
 - a) Select a **Mainframe** type of application



- b) Choose the '**Micro Focus Reflection for Desktop 16 (.NET API)**' type of connector

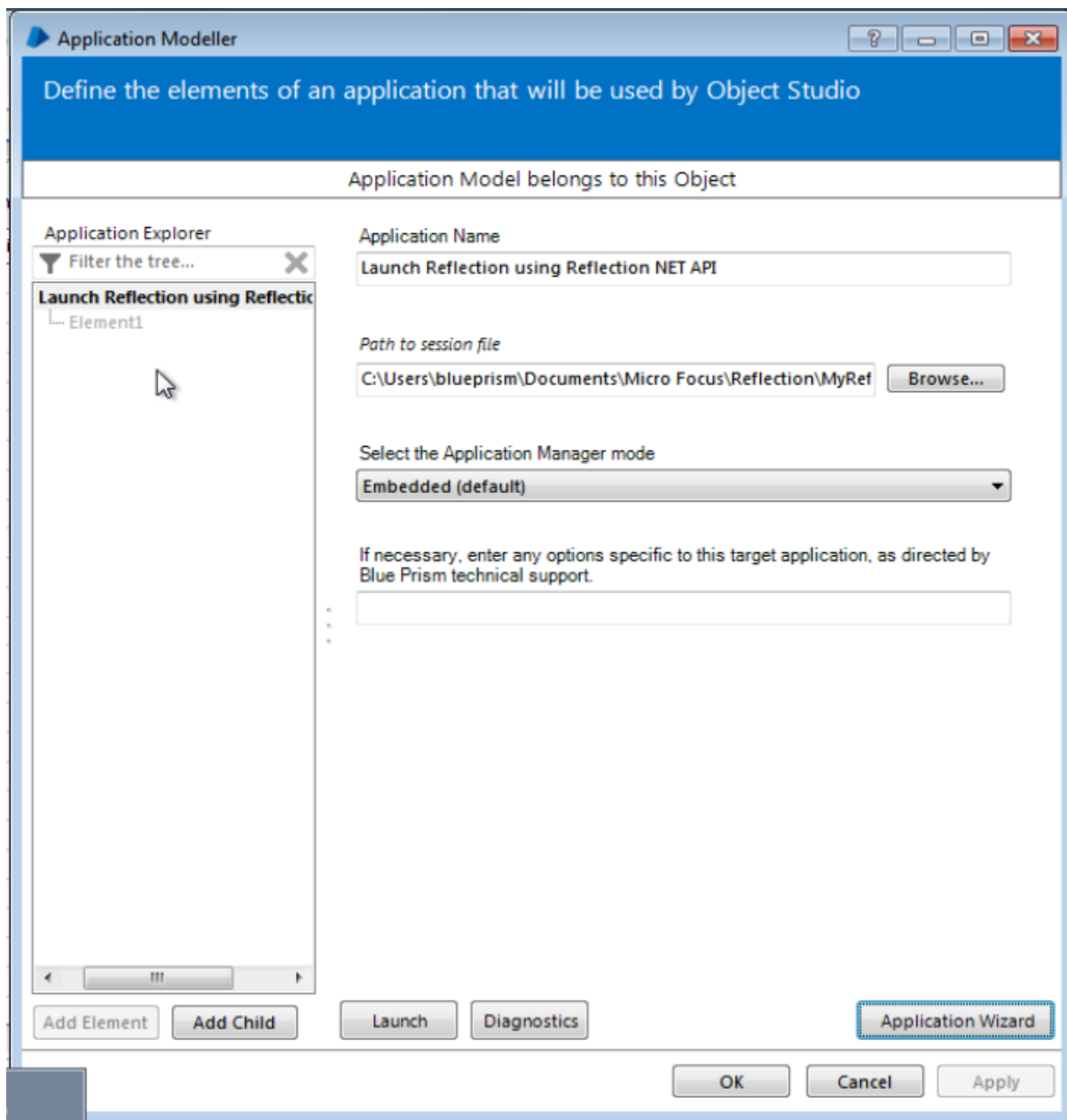


- c) Browse for the path to your RD3X session file

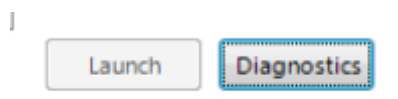


- d) Leave the remaining options at their default settings and conclude the Application Modeller wizard screens.

Test the connectivity by clicking on the "**Launch**" button to check that Micro Focus launches the correct session file and connects as expected to your running mainframe session.



If successful, your Reflection for Desktop session will launch and connect, and the Launch button will become disabled indicating that the session is attached.



You are now ready to spy the elements in your terminal session.

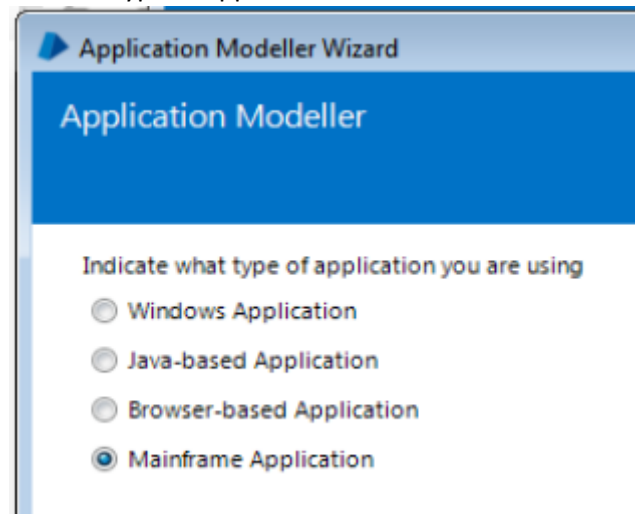
Configuring Blue Prism to run the Reflection for Desktop 9 session

This section will describe the way to configure a Business Object to launch and attach to a Reflection for Desktop 9 emulator session.

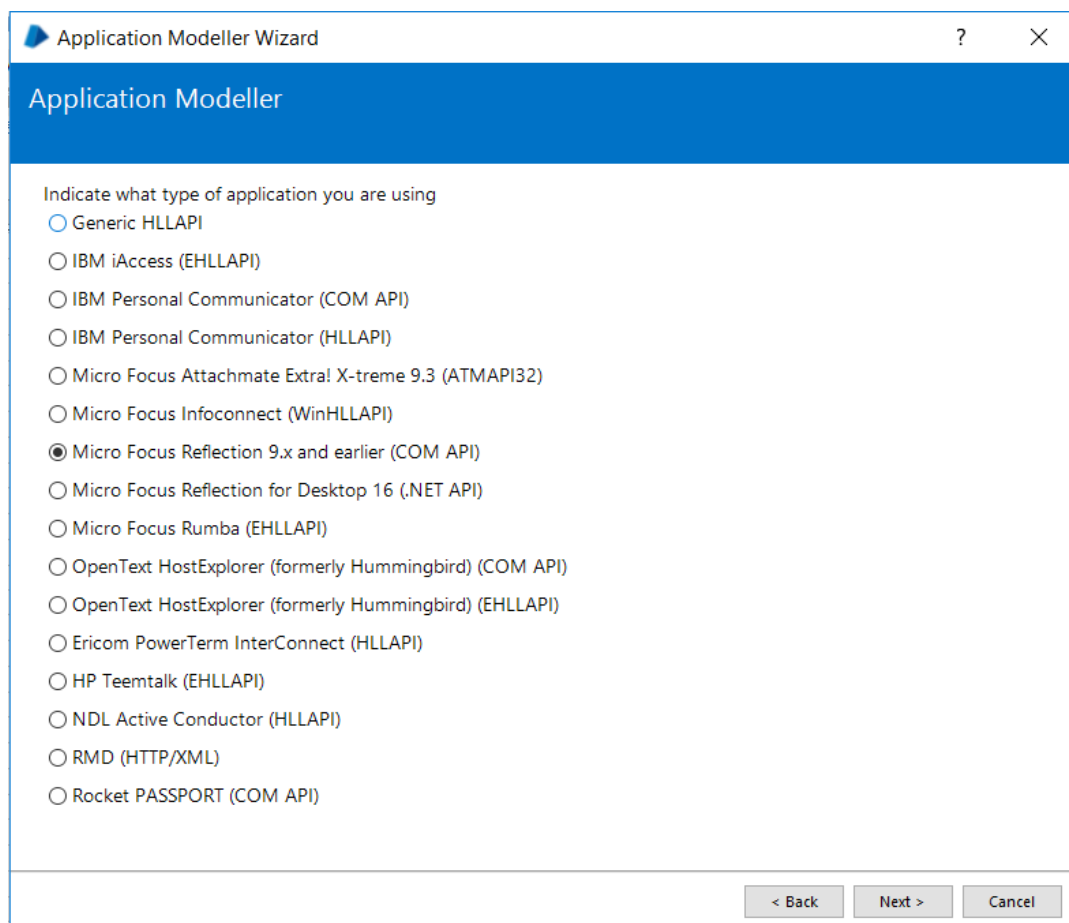
Once Micro Focus has been configured to associate the session file with a specific session shortname, then Blue Prism can be configured to Launch and Attach to the same session.

3. Run the Blue Prism client software.
4. Using Object Studio create a new Business Object with the following configuration:

e) Select a **Mainframe** type of application



f) Choose the '**Micro Focus Reflection for Desktop 9.x and earlier (COM API)**' type of connector



g) Browse for the path to your RD3X session file

The screenshot shows a configuration window for an application. It has four main sections: 1. 'Application Name' with a text box containing 'Launch R2W Reflections Session'. 2. 'Path to session file' with a text box containing 'C:\Users\blueprism\Documents\Micro Focus\Reflection\MyReflectionSession as R2W.r2w' and a 'Browse...' button to its right. 3. 'Select the Application Manager mode' with a dropdown menu showing 'Embedded (default)'. 4. A note 'If necessary, enter any options specific to this target application, as directed by Blue Prism technical support.' followed by an empty text box.

- h) Leave the remaining options at their default settings and conclude the Application Modeller wizard screens.

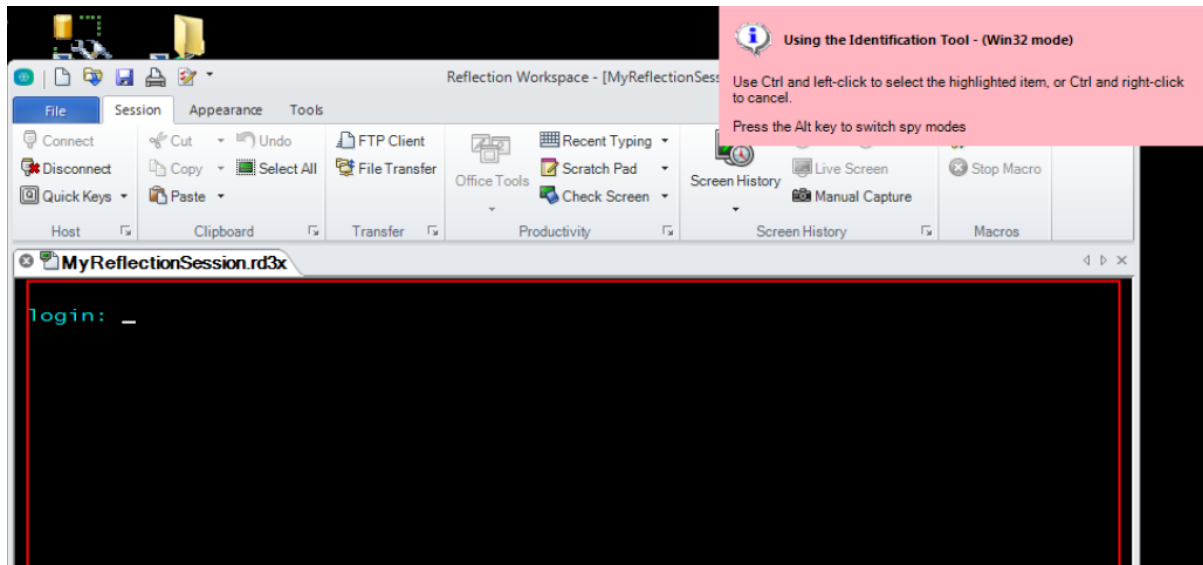
Test the connectivity by clicking on the “**Launch**” button to check that Micro Focus launches the correct session file and connects as expected to your running mainframe session.

NOTE: *R2W files are also supported in Reflection for Desktop 14 and above.*

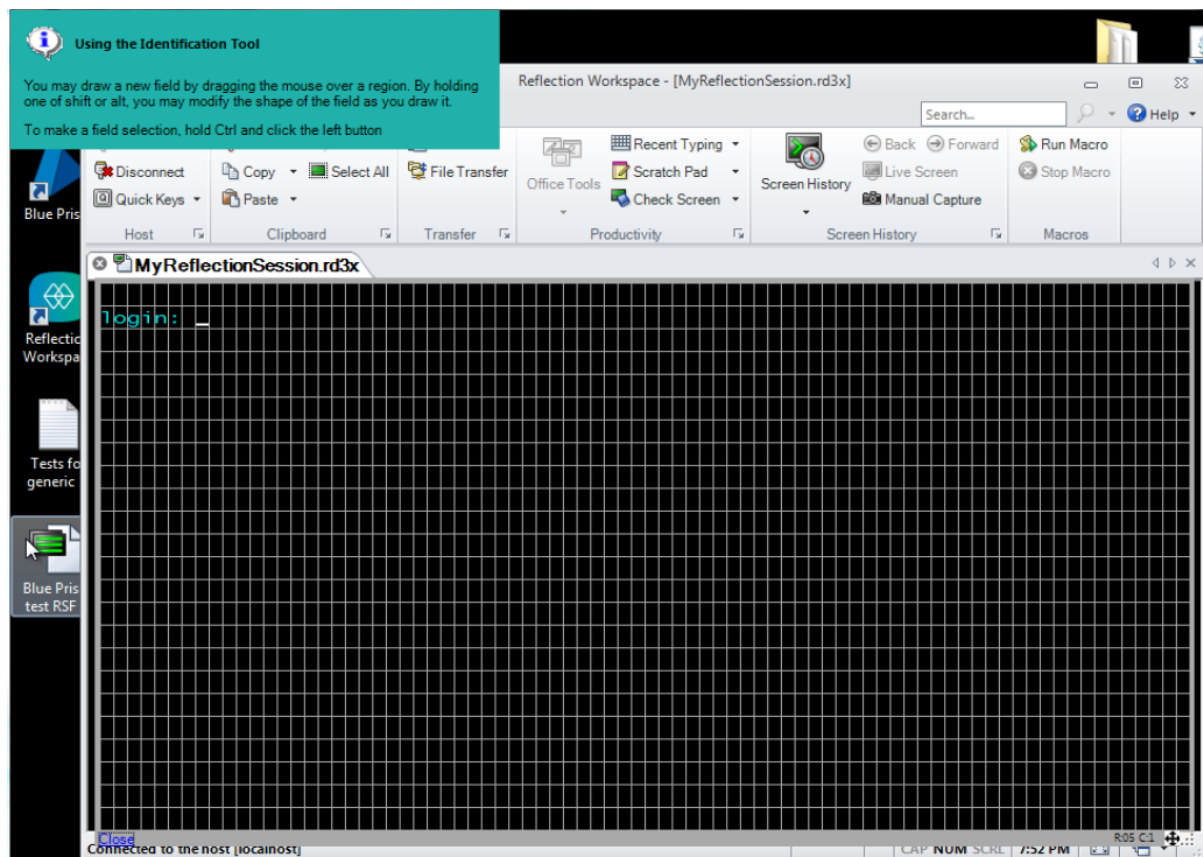
Spying elements in your Reflection session

Your Micro Focus RD3X session should now be launched and ready for spying or interacting with by Blue Prism.

Using the **Win32 spy mode** you can reveal the 8032 grid allowing for field selection, for example:



This will reveal the Identification Tool and the corresponding display grid:



Identify a field by drawing its shape and the holding the Control key and using the left mouse click button to capture the element in Blue Prism:

