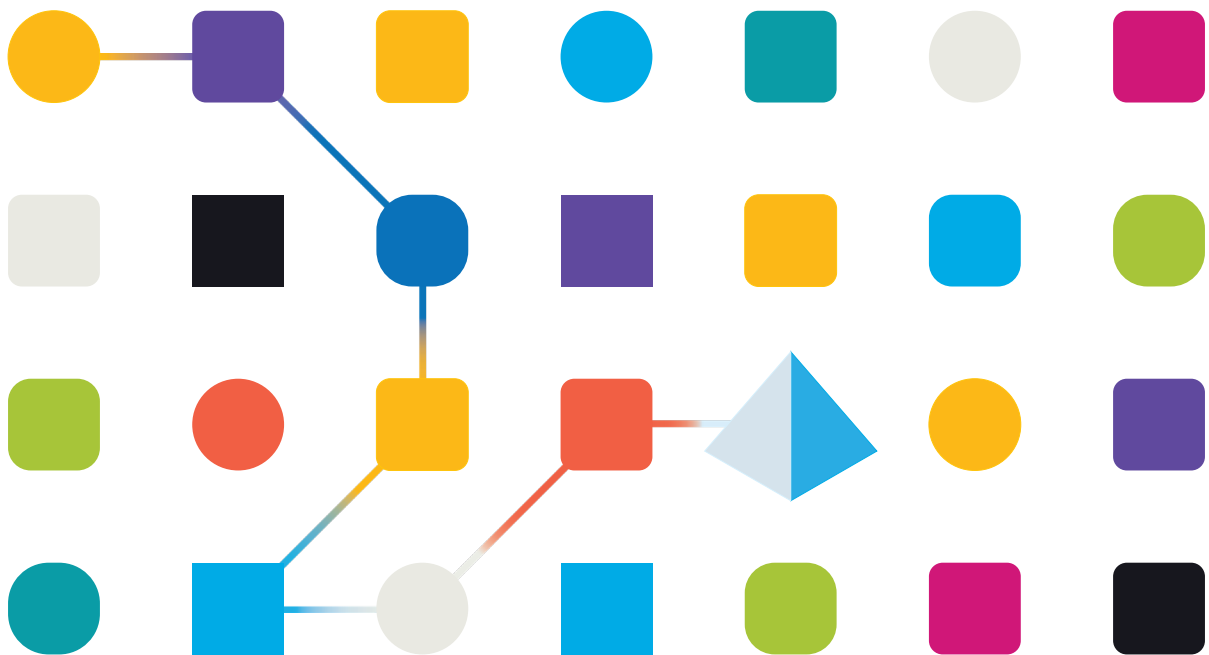


Blue Prism Mainframe Guide

Micro Focus InfoConnect

Document Revision 1.0



Trademarks and copyright

The information contained in this document is the proprietary and confidential information of Blue Prism Limited and should not be disclosed to a third party without the written consent of an authorised Blue Prism representative. No part of this document may be reproduced or transmitted in any form or by any means, electronic or mechanical, including photocopying without the written permission of Blue Prism Limited.

© **Blue Prism Limited, 2001 – 2022**

© “Blue Prism”, the “Blue Prism” logo and Prism device are either trademarks or registered trademarks of Blue Prism Limited and its affiliates. All Rights Reserved.

All trademarks are hereby acknowledged and are used to the benefit of their respective owners. Blue Prism is not responsible for the content of external websites referenced by this document.

Blue Prism Limited, 2 Cinnamon Park, Crab Lane, Warrington, WA2 0XP, United Kingdom
Registered in England: Reg. No. 4260035. Tel: +44 370 879 3000. Web: www.blueprism.com

How to configure Micro Focus InfoConnect for use with Blue Prism

Introduction

Micro Focus Attachmate produce a number of emulator products for emulating and connecting to mainframe sessions. Blue Prism supports the use of several variants of Micro Focus Attachmate's products for mainframe connectivity. In this guide document we will be describing the use of the **InfoConnect** tool, when it is configured to connect to a UniSys or 3270 mainframe session.

This document was created as a guide to configuring the InfoConnect product in preparation for attaching by Blue Prism software. The version of the Micro Focus Attachmate product used in this guide is v16.

Blue Prism's InfoConnect mainframe connector uses the **Micro Focus Attachmate IHLLAPI interface**. See the Micro Focus Attachmate web site for more information.

Pre-Requisites

Before following these instructions you will need the following:-

- a) Blue Prism software installed
- b) Micro Focus Attachmate InfoConnect software installed
- c) A running mainframe terminal
- d) An Micro Focus Attachmate InfoConnect session file created which can connect to your running mainframe system

Supported File Types

Since Blue Prism uses the IHLLAPI interface to connect, InfoConnect's native session file formats are supported. Current known supported file types include:

- **RD3X** – this is the same as the Micro Focus Attachmate Reflection Desktop session file
- **ADP**

Configuring Micro Focus Attachmate InfoConnect options

The following sections describes how to set up your Micro Focus Attachmate InfoConnect emulator in preparation for connecting to a mainframe session using Blue Prism.

Pre-requisites:

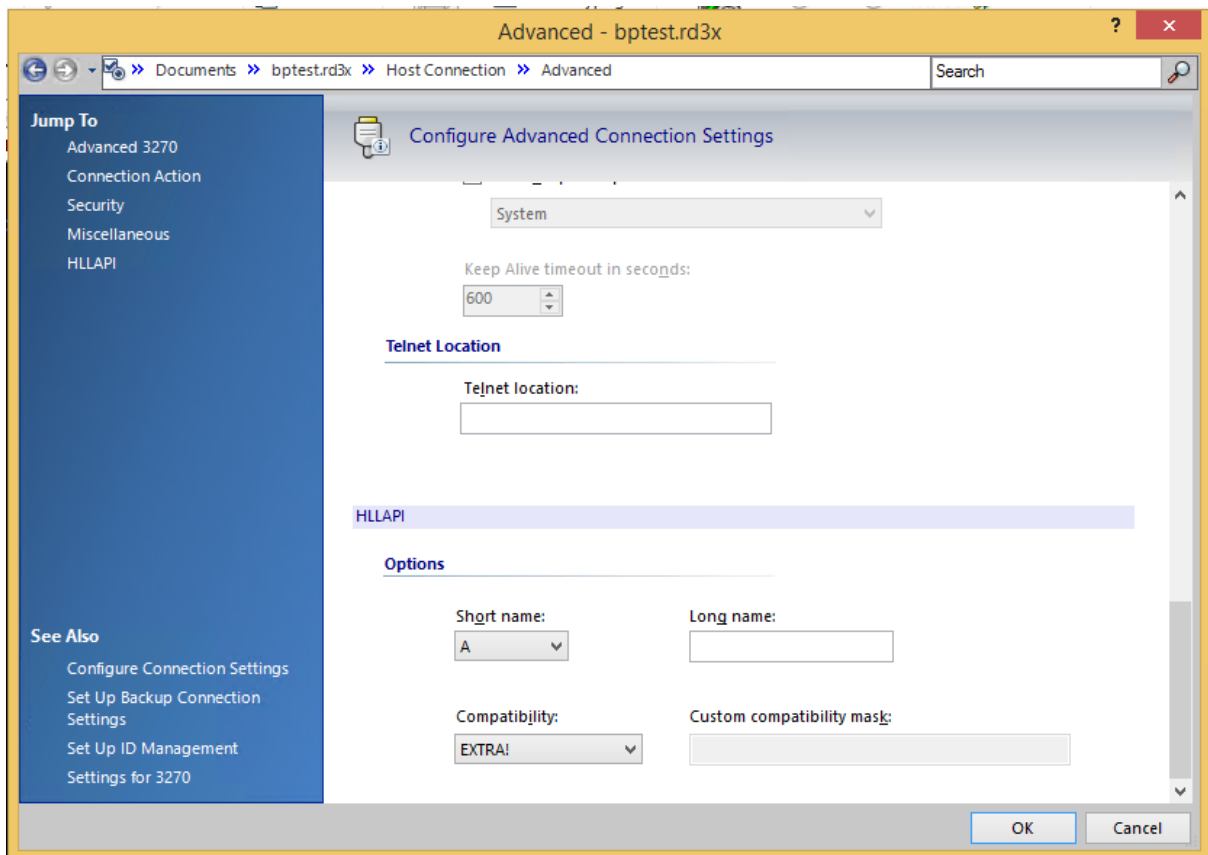
- A running mainframe
- An InfoConnect session file created to connect to the mainframe

Configuring InfoConnect to run a specific session

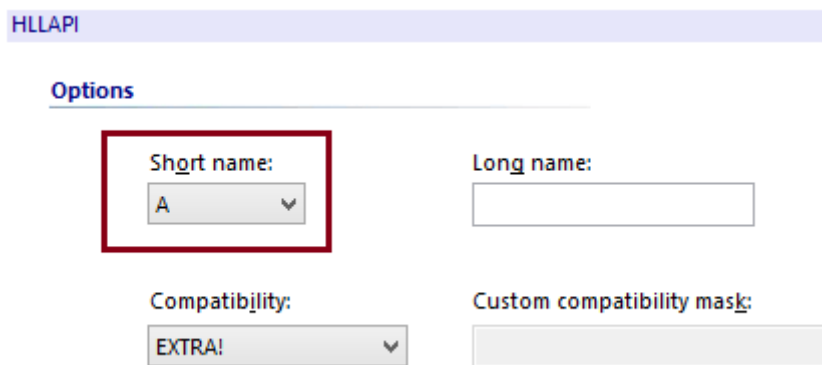
The following steps can be followed to configure InfoConnect to run a pre-defined session file:-

1. Run the Micro Focus Attachmate InfoConnect emulator program
2. If prompted, then select to **open a session file**, and browse to your existing InfoConnect session file (typically *.rd3x or *.adp file extensions)

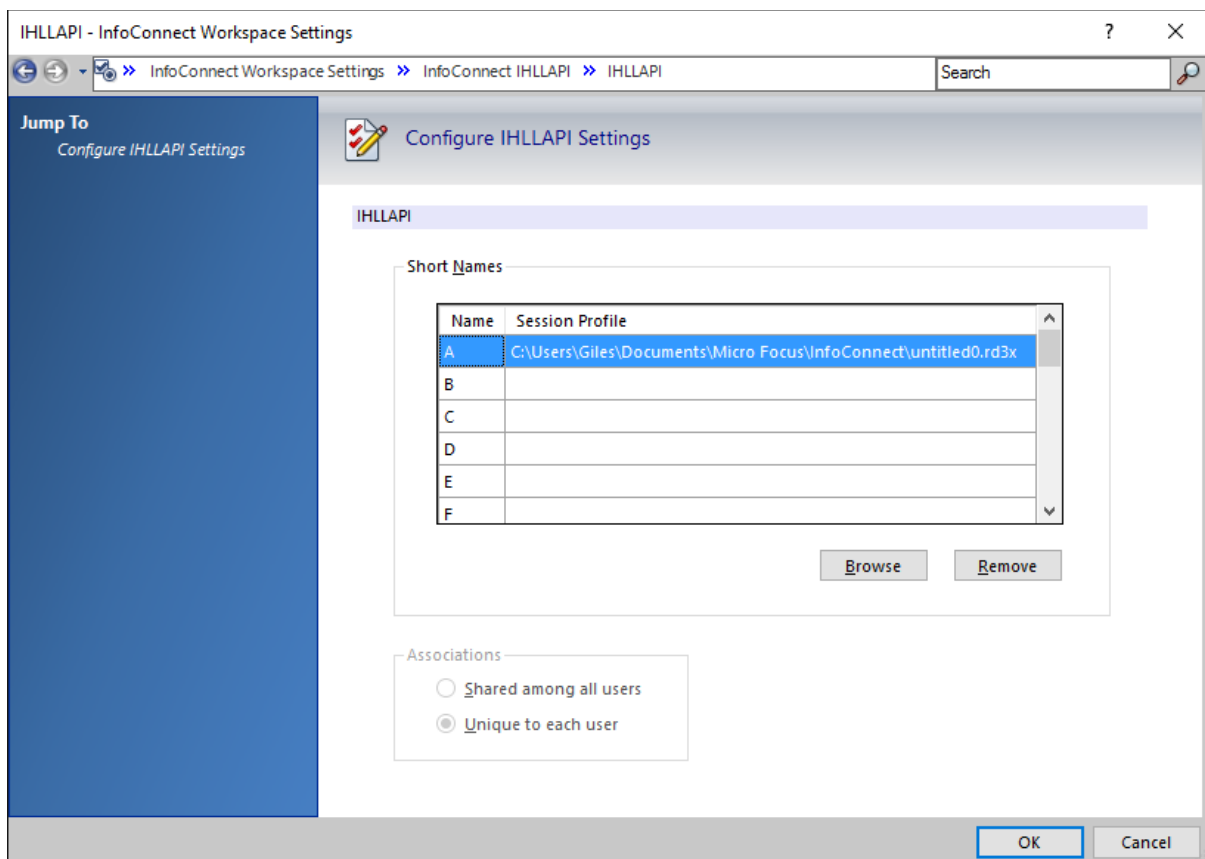
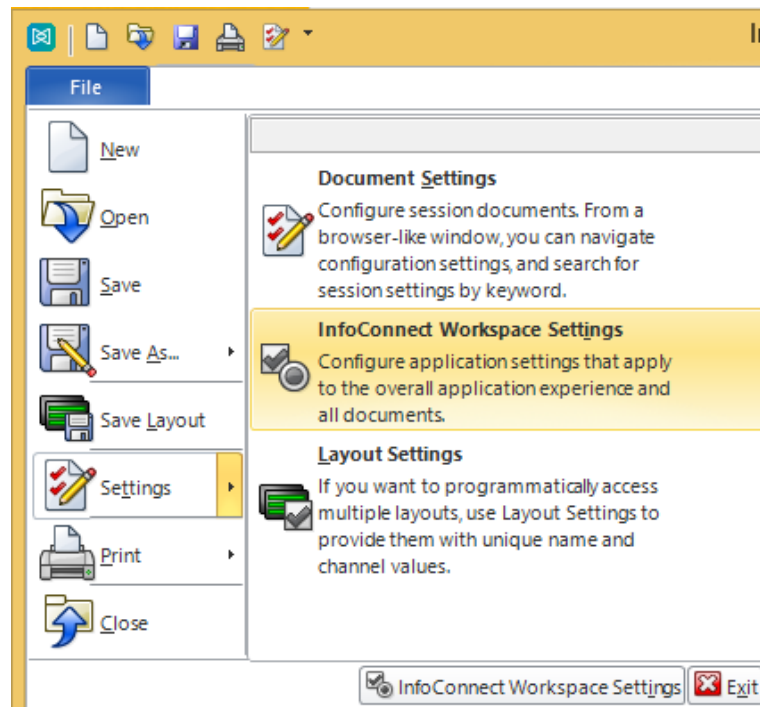
3. Select the **Configure Advanced Connection Settings** option from the **Host Connection** settings screen:



4. In the **HLLAPI** section, set the **Short Name** field to be your chosen Session Short Name. Click the OK button to confirm the setting.



5. Select the **InfoConnect Workspace Settings** link, then choose the **Configure IHLLAPI Settings** screen.

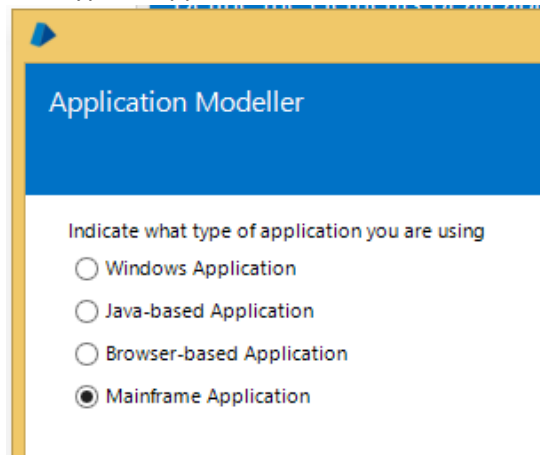


6. Select the **Session Short Name** letter (see Step 4) and browse to locate the InfoConnect Session file (*.rd3x or *.adp) that you want to associate with this Session Short Name.
 - This character code will be used by Blue Prism’s Application Modeller to identify the associated session, and will be called a “**Session Identifier**” in Blue Prism.
7. Click the **OK** button to set this configuration, and then exit from the InfoConnect session, ensuring that the session and the emulator are both closed.

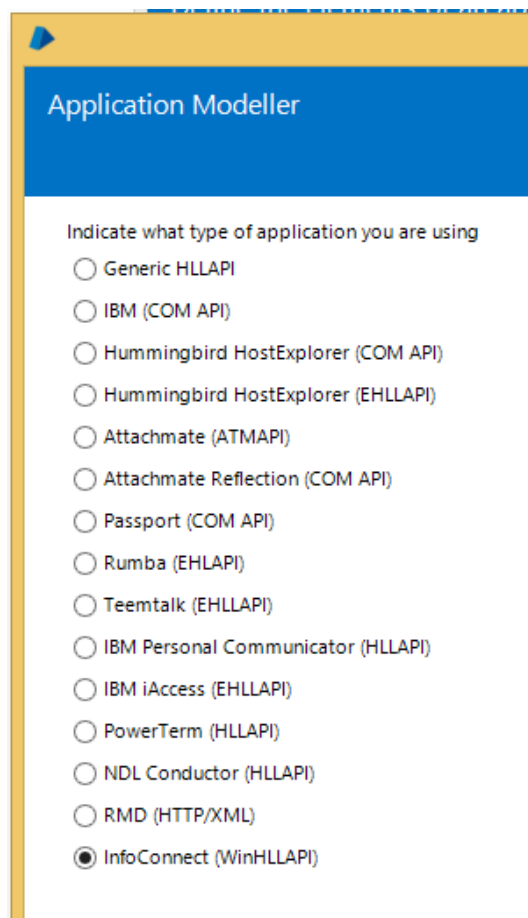
Configuring Blue Prism to run the InfoConnect session

Once InfoConnect has been configured to associate the session file with a specific session shortname, then Blue Prism can be configured to Launch and Attach to the same session.

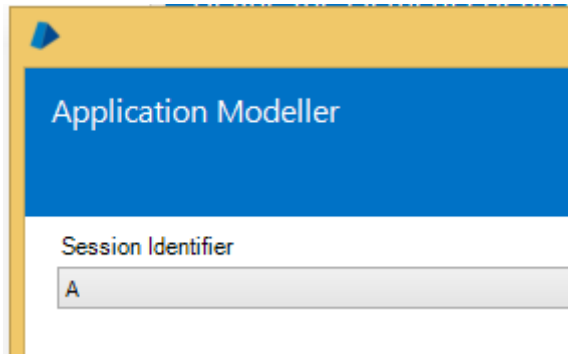
1. Run the Blue Prism client software.
2. Using Object Studio create a new Business Object with the following configuration:
 - a) Select a **Mainframe** type of application



- b) Choose the **'InfoConnect (WinHLLAPI)'** type of connector

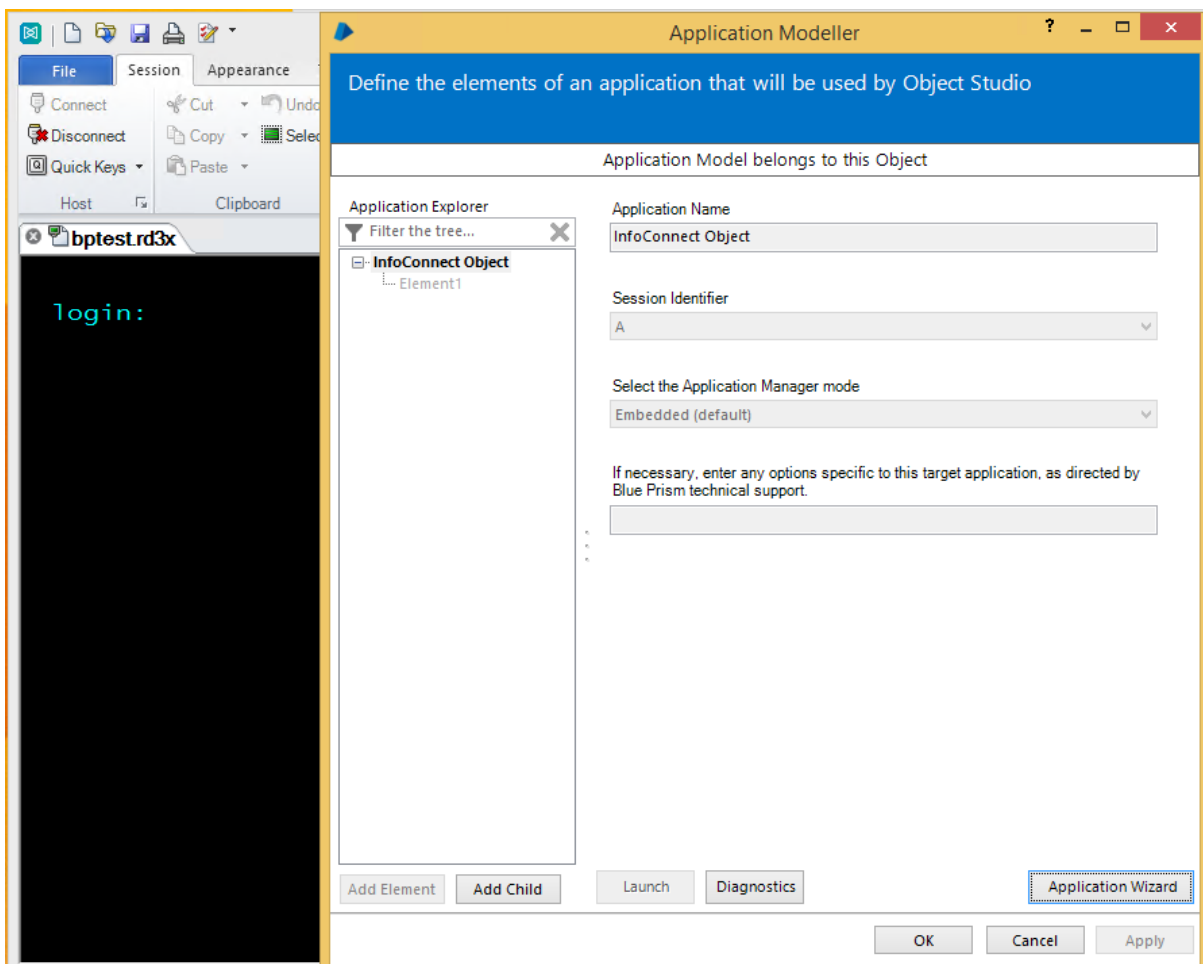


- c) For the **Session Identifier** selection choose the **Session Shortname** that was configured in the InfoConnect advanced options screen (**Step 7** in the Micro Focus Attachmate configuration steps).



- d) Leave the remaining options at their default settings and conclude the Application Modeller wizard screens.

With the two products configured test the connectivity by clicking on the “**Launch**” button to check that InfoConnect launches the correct session file and attaches as expected to your running mainframe session. If the Launch button is disabled, this indicates a successful attachment.



Your InfoConnect session should now be launched and ready for spying or interacting with by Blue Prism.

Using the **Win32 spy mode** click on the Identify button to select the whole session window inside the terminal emulator's frame. This will reveal the 80x32 grid allowing for field selection, for example:

