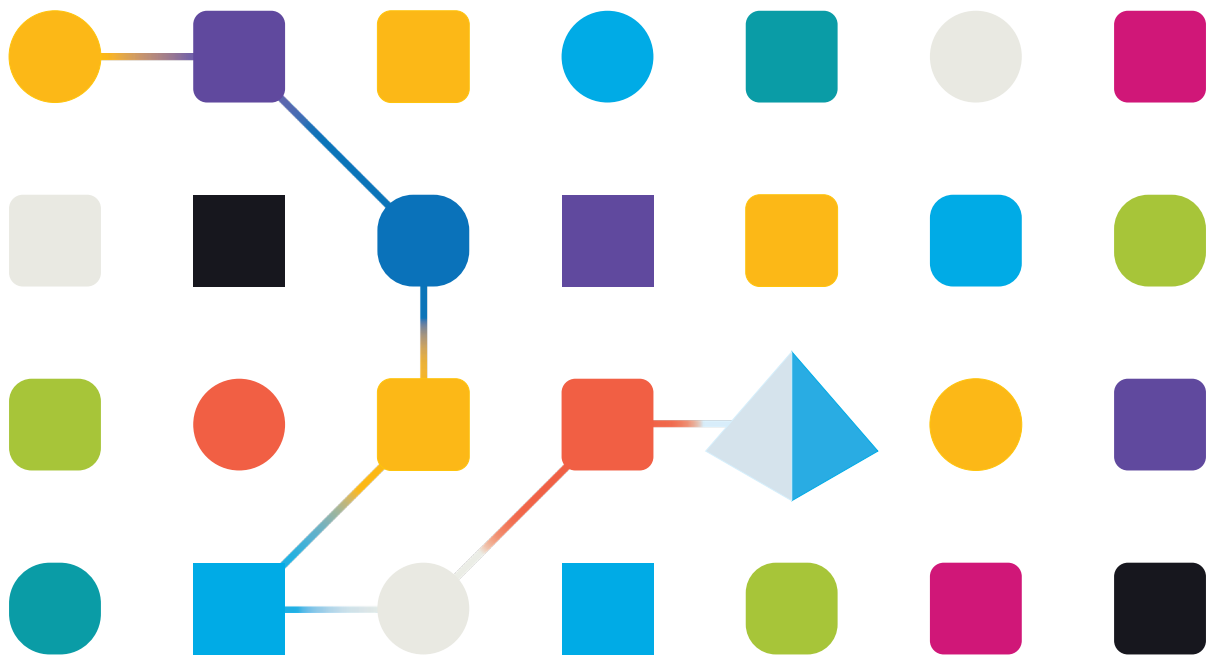




Blue Prism Mainframe Guide

Micro Focus Extra

Document Revision 1.0



Trademarks and copyright

The information contained in this document is the proprietary and confidential information of Blue Prism Limited and should not be disclosed to a third party without the written consent of an authorised Blue Prism representative. No part of this document may be reproduced or transmitted in any form or by any means, electronic or mechanical, including photocopying without the written permission of Blue Prism Limited.

© **Blue Prism Limited, 2001 – 2022**

© “Blue Prism”, the “Blue Prism” logo and Prism device are either trademarks or registered trademarks of Blue Prism Limited and its affiliates. All Rights Reserved.

All trademarks are hereby acknowledged and are used to the benefit of their respective owners.
Blue Prism is not responsible for the content of external websites referenced by this document.

Blue Prism Limited, 2 Cinnamon Park, Crab Lane, Warrington, WA2 0XP, United Kingdom
Registered in England: Reg. No. 4260035. Tel: +44 370 879 3000. Web: www.blueprism.com

How to configure Micro Focus Extra! For use with Blue Prism

Introduction

Micro Focus produce a number of emulator products for emulating and connecting to mainframe sessions. Blue Prism supports the use of several variants of Micro Focus's products for mainframe connectivity. In this guide document we will be describing the use of the Extra! Xtreme tool, when it is configured to connect to an IBM 3270 form of mainframe session.

This document was created as a guide to configuring the Micro Focus Extra! Product in preparation for attaching by Blue Prism software. The version of the Micro Focus product used in this guide is v9.3, but earlier versions also have similar instructions.

Pre-Requisites

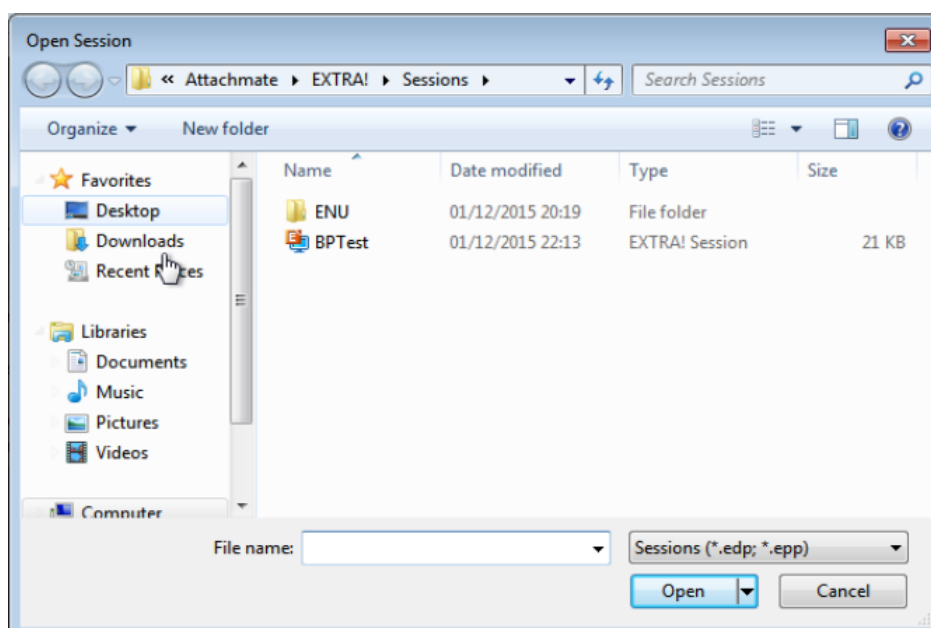
Before following these instructions you will need the following:-

- a) Blue Prism software installed
- b) Micro Focus Extra! Software installed
- c) A valid running mainframe session to connect to (*not the demo sessions provided as examples by Micro Focus*)
- d) An Micro Focus session file (.EDP) created which can connect to your running mainframe system

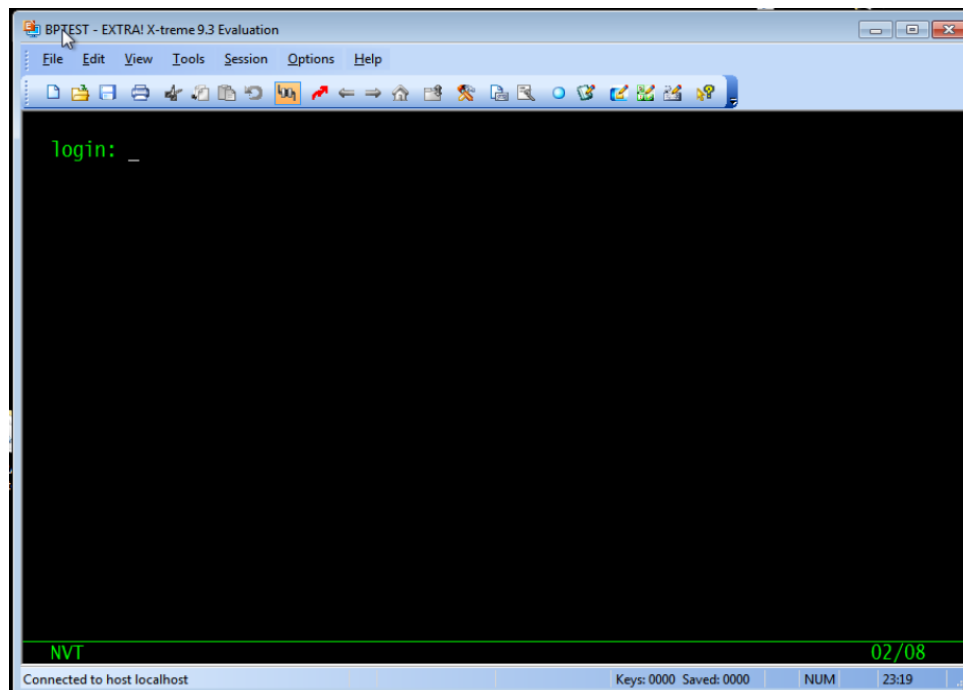
Configuring Micro Focus to run a specific session

The following steps can be followed to configure Micro Focus to run a pre-defined session file:-

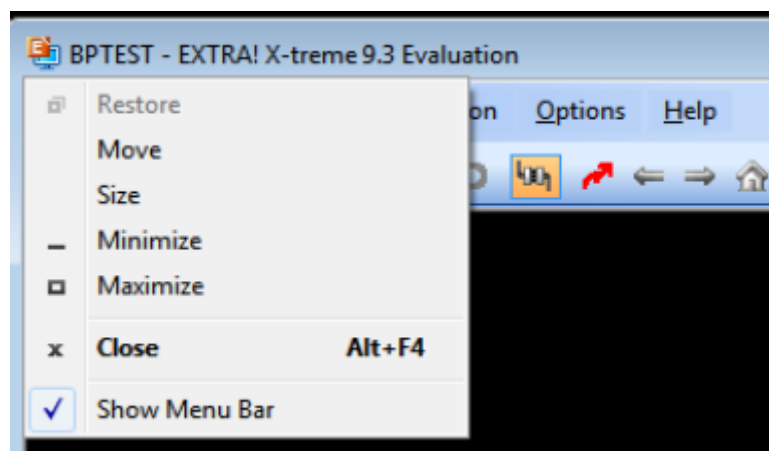
1. Run the Micro Focus Extra! Program
2. If prompted, then select to **open a session file**, and browse to your existing EXTRA! Session file (*.edp)



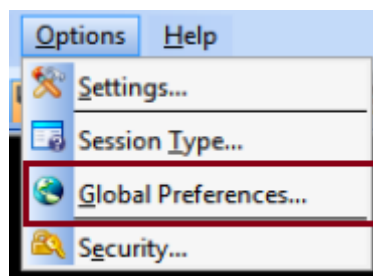
3. Check that the session connects properly, for example:



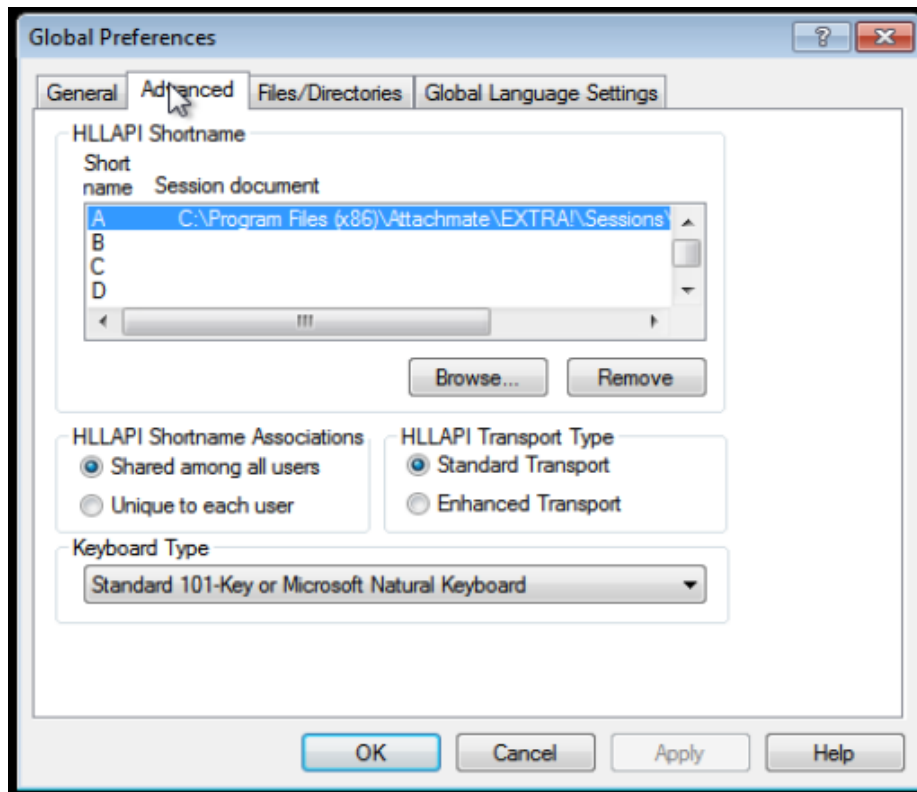
4. Ensure that you can see the **Menu items**.
 - You may need to select the 'Show Menu Bar' option from the application's context menu



5. Select the **Global Preferences** option from the **Options** menu



6. Select the **Advanced** tab to reveal information about the **HLLAPI Shortname** configuration options.

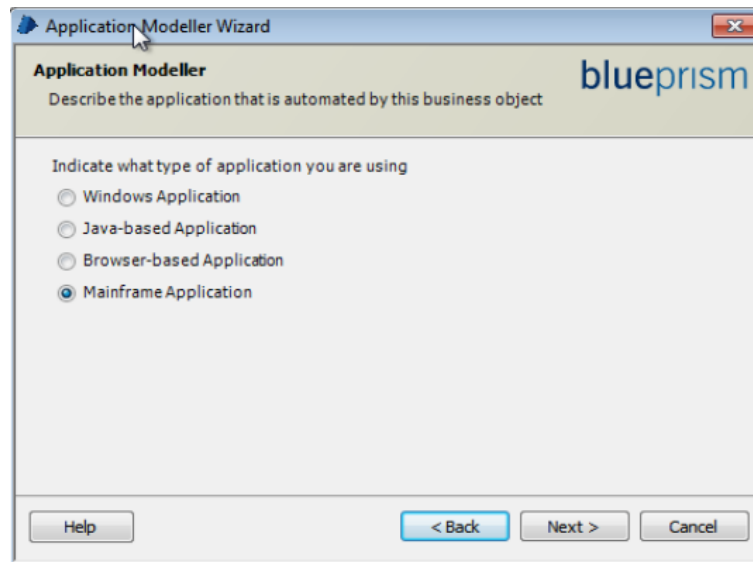


7. Select a **Session Shortname** letter and browse to locate the Extra! Session file (*.edp) that you want to associate with this shortname identifier .
 - This character code will be used by Blue Prism's Application Modeller to identify the associated session, and will be called a "**Session Identifier**" in Blue Prism.
8. Click the **OK** button to set this configuration, and then exit from the Micro Focus Extra! Session, ensuring that the session and the emulator are both closed.

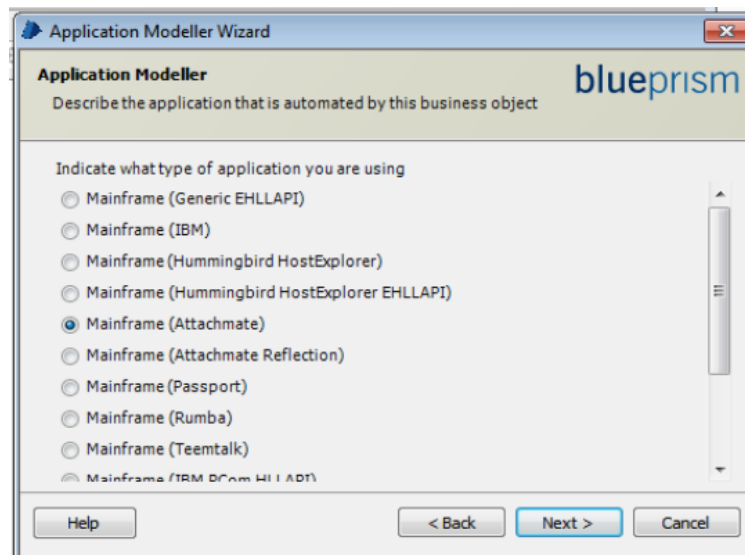
Configuring Blue Prism to run the Extra! session

Once Micro Focus has been configured to associate the session file with a specific session shortname, then Blue Prism can be configured to Launch and Attach to the same session.

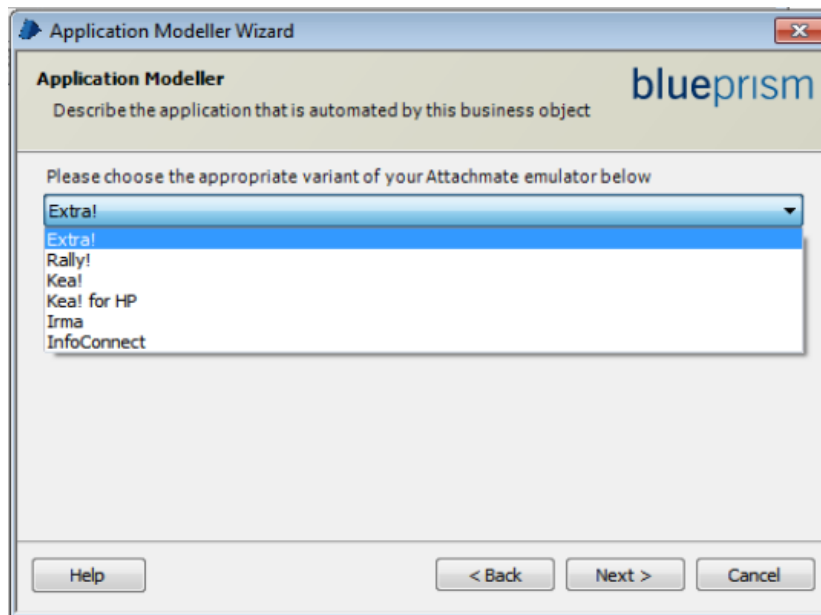
1. Run the Blue Prism client software.
2. Using Object Studio create a new Business Object with the following configuration:
 - a) Select a **Mainframe** type of application



- b) Choose the '**Mainframe (Micro Focus)**' type of connector

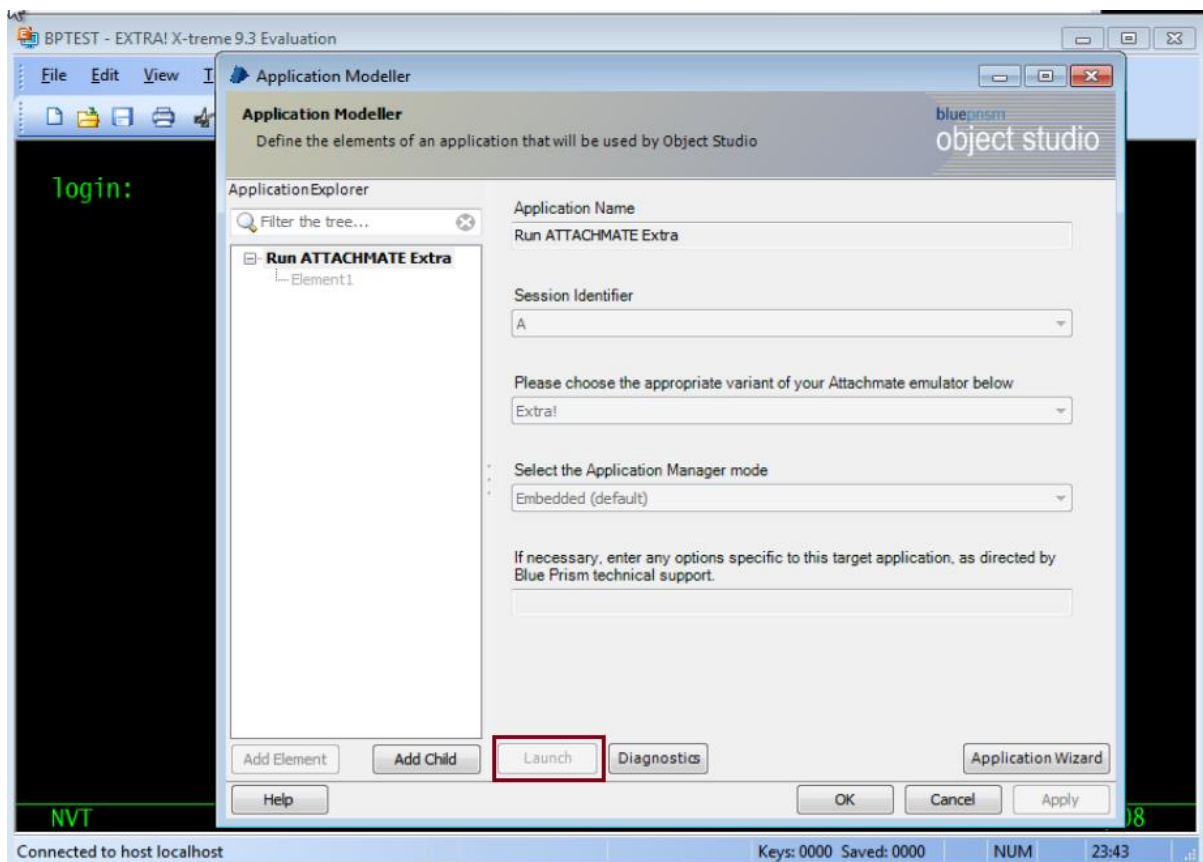


- c) For the **Session Identifier** selection choose the **Session Shortname** that was configured in the Micro Focus advanced options screen (**Step 7** in the Micro Focus configuration steps).
- d) Select the correct product from the list of available Micro Focus products



- e) Leave the remaining options at their default settings and conclude the Application Modeller wizard screens.

With the two products configured test the connectivity by clicking on the **“Launch”** button to check that Micro Focus launches the correct session file and connects as expected to your running mainframe session.



Your Micro Focus session should now be launched and ready for spying or interacting with by Blue Prism.

Using the Win32 spy mode you can reveal the 80x32 grid allowing for field selection, for example:

