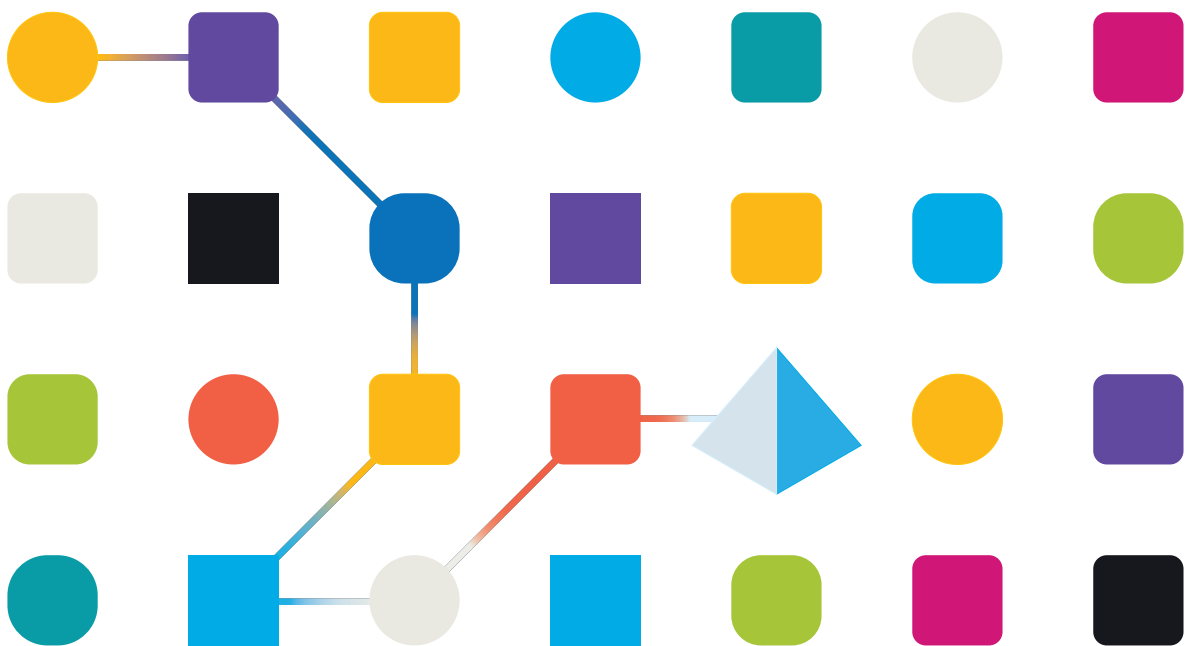




Blue Prism Desktop 1.0

Administrator Guide

Document Revision: 1.0



Trademarks and Copyright

The information contained in this document is the proprietary and confidential information of Blue Prism Limited and should not be disclosed to a third-party without the written consent of an authorized Blue Prism representative. No part of this document may be reproduced or transmitted in any form or by any means, electronic or mechanical, including photocopying without the written permission of Blue Prism Limited.

© Blue Prism Limited, 2001 – 2022

“Blue Prism”, the “Blue Prism” logo and Prism device are either trademarks or registered trademarks of Blue Prism Limited and its affiliates. All Rights Reserved.

All trademarks are hereby acknowledged and are used to the benefit of their respective owners. Blue Prism is not responsible for the content of external websites referenced by this document.

Blue Prism Limited, 2 Cinnamon Park, Crab Lane, Warrington, WA2 0XP, United Kingdom.
Registered in England: Reg. No. 4260035. Tel: +44 370 879 3000. Web: www.blueprism.com

Contents

- Blue Prism Desktop administration** 4
- Blue Prism Desktop licenses** 4
- Blue Prism audit trail for Desktop** 5
 - Blue Prism Desktop audit logs 5
 - Blue Prism Desktop session logs 5
 - Session history for Desktop client users 6
- Control Room with a Desktop license applied** 7
- Desktop user roles** 8
- Configuring environment connections for Blue Prism Desktop** 8
 - Create a new connection 9
 - Edit a connection 13
 - Import a connection 14
 - Delete a connection 15
- Blue Prism Desktop configuration** 16
 - Change the limit for the number of items in a folder 16

Blue Prism Desktop administration

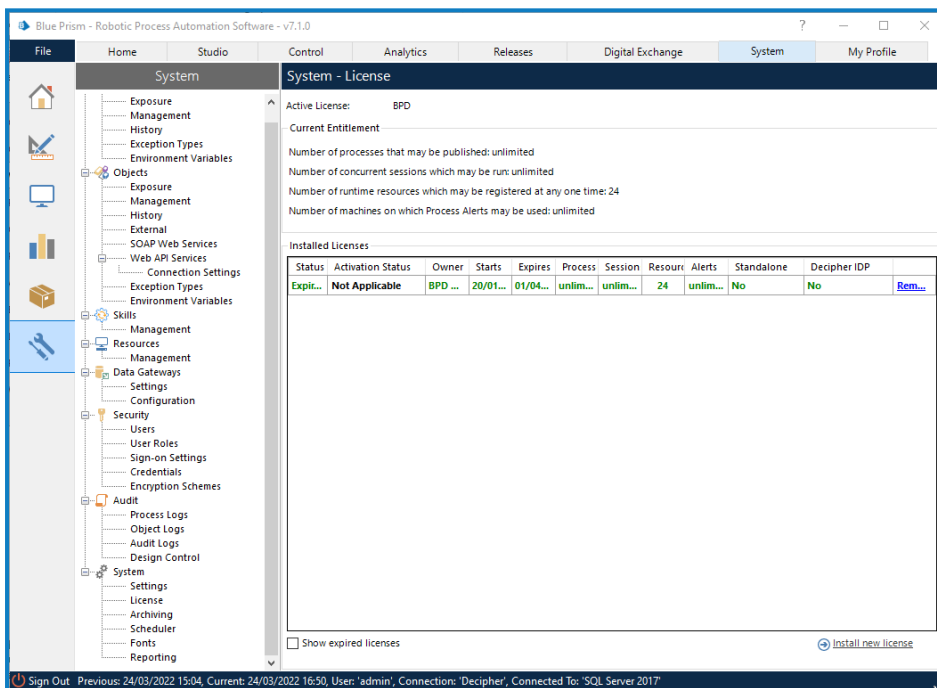
The following information relates to system administration that is specific to the use of Blue Prism® Desktop product.


Blue Prism Desktop licenses

Unlike Blue Prism Enterprise licenses, the use of which is determined by the number of concurrent sessions, Blue Prism Desktop licenses are associated with the number of registered Desktop runtime resources.

When a user logs into the Blue Prism Desktop client for the first time, their machine is registered as a Desktop runtime resource and a Desktop license is associated with that machine. If another user logs onto that machine, they will share the same Blue Prism Desktop license.

To remove a license from a machine and make it available for another machine, the Desktop system administrator will need to retire the Desktop runtime resource, see [Resource management](#) for details. Subsequent login attempts on that machine will fail until the resource is unretired.




 In Blue Prism Desktop 1.0, you cannot apply a Desktop license and a Blue Prism Enterprise license to a single environment. Blue Prism Desktop requires its own, separate environment to function correctly.

Blue Prism audit trail for Desktop

Blue Prism Desktop uses the same auditing functionality as Blue Prism Enterprise, therefore the audit trail for Blue Prism Desktop matches that of Blue Prism Enterprise. Session logs are stored locally and synchronized with the Blue Prism application server and can be viewed in Blue Prism Enterprise by a Blue Prism administrator.

In the Desktop client, users can view information about all the sessions they have run, however, audit logs are only visible in the Blue Prism interactive client.

 If the Blue Prism Desktop client is closed before all session logs have been uploaded to the server via the API, they will remain on the user's machine until the client is re-opened.

Blue Prism Desktop audit logs

For details on Blue Prism audit logs, see [Audit logs](#).

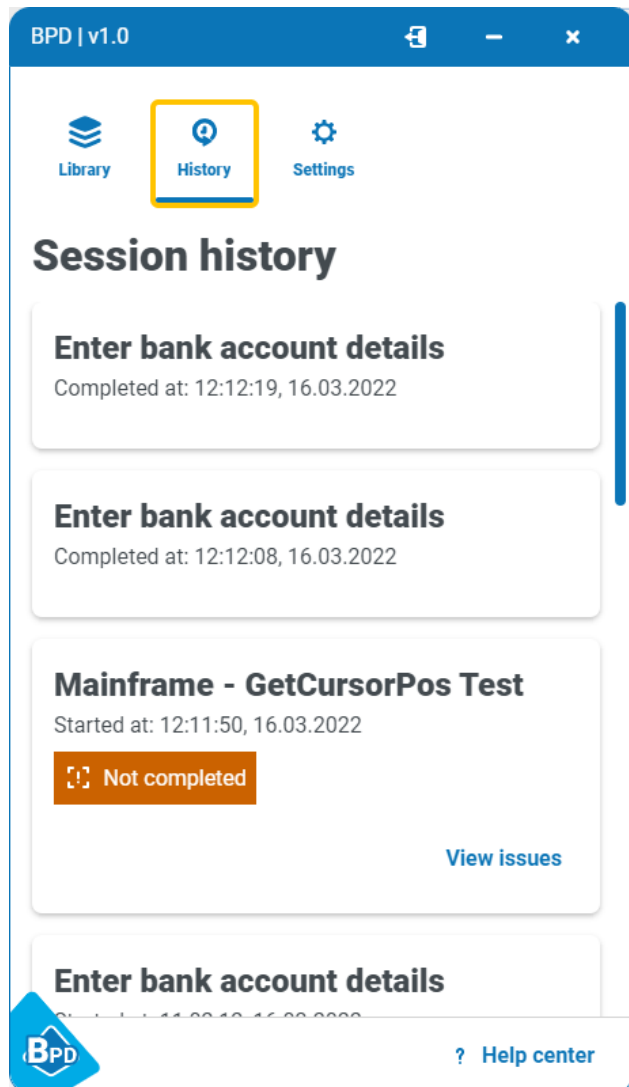
Blue Prism Desktop session logs

As with Blue Prism Enterprise, the session logs for processes that have run in Blue Prism Desktop can be viewed in the session log viewer in Control Room. There are no differences between the session logs from the same process being run in Blue Prism Enterprise, or in Blue Prism Desktop. For details on Blue Prism session logs, see [Session log viewer](#).

In the Session Log Viewer for a selected process, you can also view the input parameters for all Input stages included in the process. See [Log Parameter Viewer](#) for details.

Session history for Desktop client users

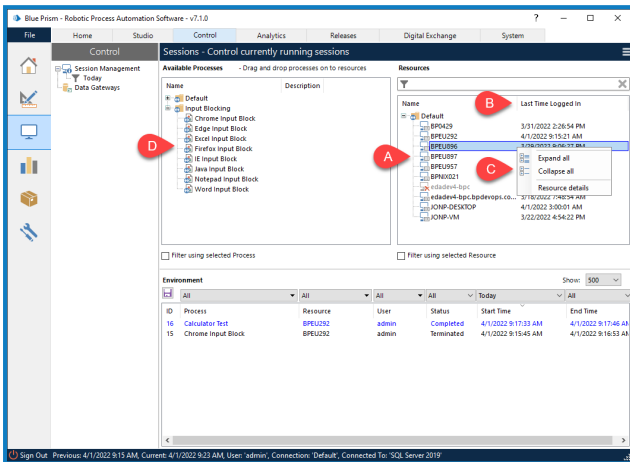
In the Desktop client, users can select the **History** tab to see information about all the sessions they have run. A list of historical sessions displays in date/time order, starting with the most recent. Each session in the list represents a single run of a process.



If a process has not successfully completed, a **View issues** link displays for that process, which opens a new screen that displays more information about why the process failed to run correctly. See [Session history](#) for details.

Control Room with a Desktop license applied

The Blue Prism Control Room has the following differences with a Desktop license applied:



- A. Runtime resource icons are different for Desktop resources.
- B. The information contained in the Resources panel is different. With a Desktop license, only the resource name and the last time a user logged into that resource are displayed.
- C. The shortcut menu options for runtime resources has been reduced. Only the expand and collapse all, and the resource details options are available.
- D. The drag and drop functionality to run a process is disabled (you can't drag a process onto a resource or vice versa).

Desktop user roles

To simplify the task of setting the permissions for Desktop users, a Desktop-specific user role, **Desktop Users**, can be applied from the Blue Prism interactive client. In addition, users with the **System Administrators** role applied will also be able to log into the Blue Prism Desktop application. For information on how to apply roles to users, see [Blue Prism roles](#).

Configuring environment connections for Blue Prism Desktop

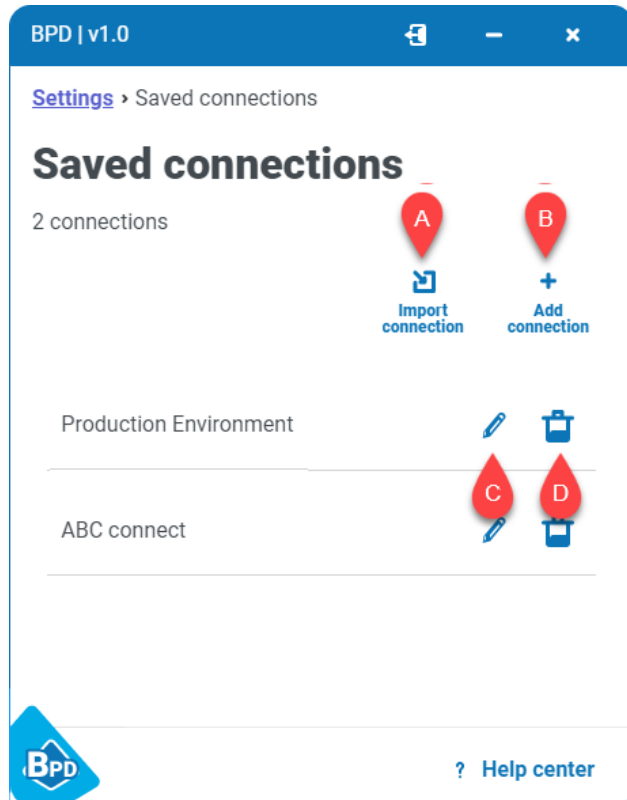
Blue Prism Desktop environment connections enable the Desktop application to connect to specific Blue Prism environments using a Desktop license.

You can add a new connection, or multiple connections, by importing a connection configuration file. You can configure connections on the Welcome screen before logging in, or on the Settings tab after logging in.

Alternatively, you can create a new connection in the Desktop application. You can also edit and delete connections (you cannot edit or delete the connection you are currently using), if you require assistance, please contact your system administrator.

Although the functionality is available to do so, it is not expected that Desktop users will create, edit, or delete their own connections. When rolling out Blue Prism Desktop to end users, it is recommended that system administrators create and distribute a centrally-controlled Desktop.User.config file to be imported by Desktop users.

To configure a connection in the Blue Prism Desktop application, click **Saved connections**. The Saved connections screen displays.



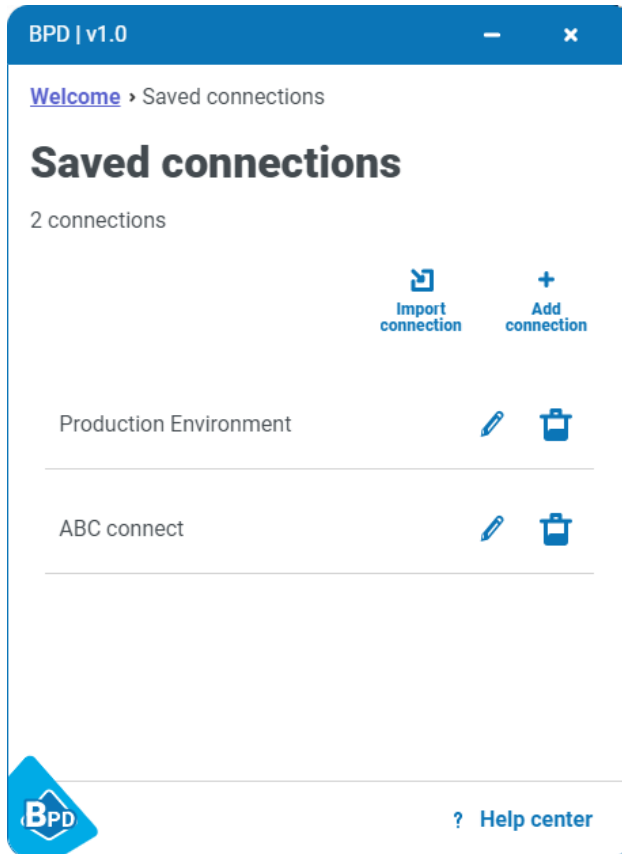
The following options are available:

- Import Connection** – Add one or more new connections by importing a connection configuration file, see [Import a connection on page 14](#).
- Add connection** – Add a completely new connection, see [Create a new connection on the next page](#).
- Edit connection** – Edit the configuration details of this connection, see [Edit a connection on page 13](#).
- Delete connection** – Delete this connection, see [Delete a connection on page 15](#).

Create a new connection

1. On the Welcome screen, click **Configure connection**.

The Saved connections screen displays.





2. Click **Add connection**.

The Create new connection screen displays.

The screenshot shows a window titled "BPD | v1.0" with standard window controls. The main content area is titled "Create new connection" and contains the following elements:

- Connection name:** A text input field.
- URL for Authentication Server:** A text input field.
- URL for Digital Worker API:** A text input field.
- URL for Blue Prism API:** A text input field.
- Buttons:** "Cancel" and "Create" buttons.
- Footer:** A "BPD" logo on the left and a "? Help center" link on the right.

3. Enter the connection details, as prompted. All the fields are mandatory.

Field name	Information required
Connection name	<p>Enter a name for this connection. Connection names must be unique, and are case-sensitive.</p> <div style="border: 1px solid #0070C0; padding: 5px; margin-top: 10px;"> <p> If you try to create a new connection with the same name as an existing one, a warning message displays and you cannot save the connection.</p> </div>
URL for Authentication Server	<p>Enter the Authentication Server URL, but do not include https:// in the URL.</p> <div style="border: 1px solid #FF6600; padding: 5px; margin-top: 10px;"> <p> To ensure a secure connection is used, all Authentication Server URLs must include https://. This has therefore been hard-coded into the field and does not need to be entered.</p> </div>
URL for Digital Worker API	Enter the URL of the Digital Worker API to which you want to connect.
URL for Blue Prism API	Enter the URL of the Blue Prism API to which you want to connect.

BPD | v1.0
— ×

Create new connection


Connection name

URL for Authentication Server

URL for Digital Worker API

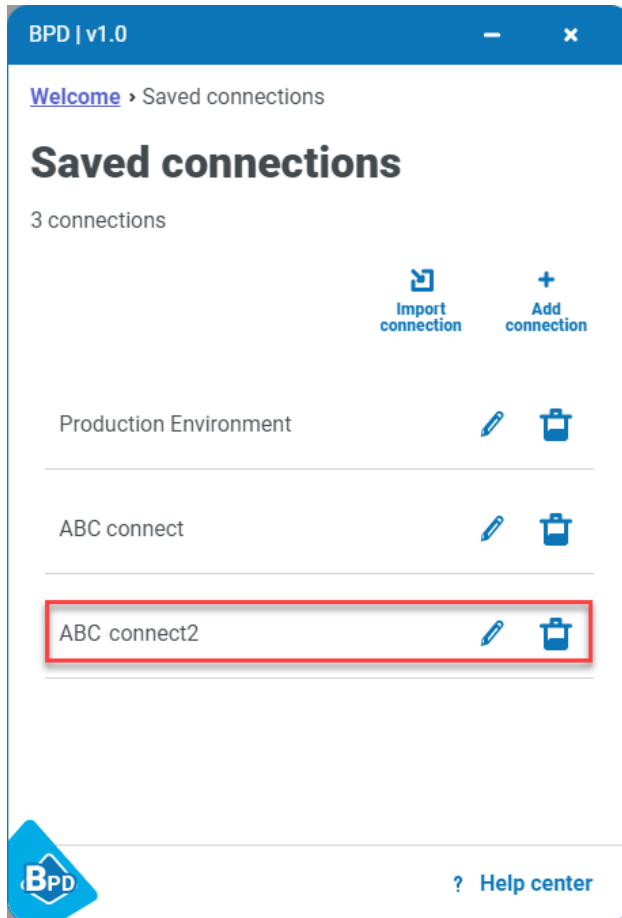
URL for Blue Prism API

Cancel
Create


[? Help center](#)


4. Click **Create** to add the new connection.

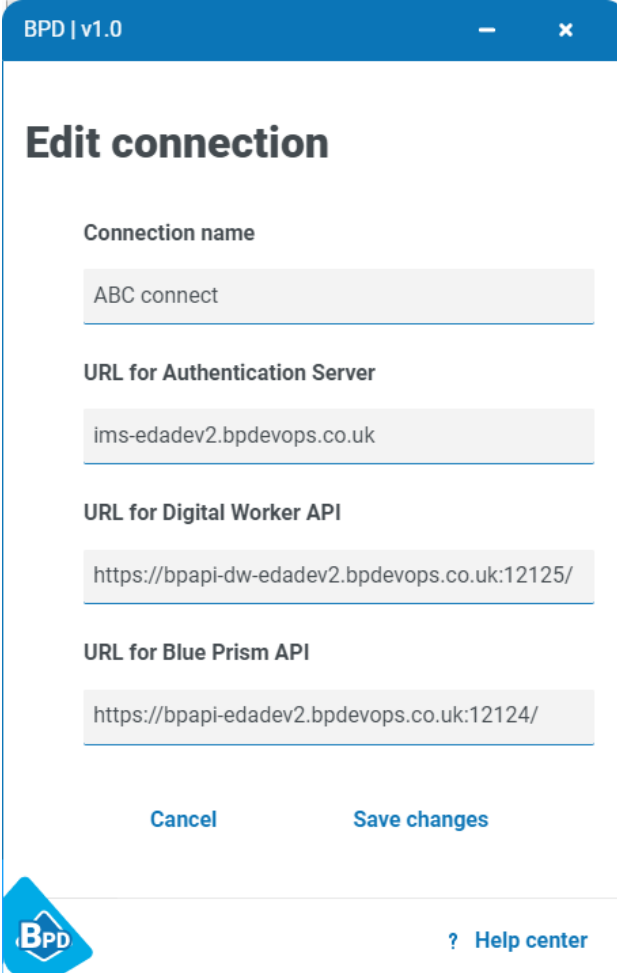
The connection is created and displays on the Saved connections screen.



The configuration is updated in the Desktop.User.config file, which is located in C:\Users\\AppData\Roaming\Blue Prism Limited\Desktop. The configuration file can then be imported by clicking **Import connection** on the Saved connections screen on each Desktop user's computer. See [Import a connection on page 14](#) for details.

Edit a connection

1. On the Saved connections screen, click the Edit connection icon .
The Edit connection screen displays.



BPD | v1.0

Edit connection


Connection name
ABC connect

URL for Authentication Server
ims-edadev2.bpdevops.co.uk

URL for Digital Worker API
https://bpapi-dw-edadev2.bpdevops.co.uk:12125/



URL for Blue Prism API
https://bpapi-edadev2.bpdevops.co.uk:12124/

[Cancel](#) [Save changes](#)

 [? Help center](#)

2. Edit the connection details as required.
3. Click **Save changes**.

The connection is updated and the Saved connections screen displays.

 You cannot edit the currently used connection from the Settings screen once logged into Desktop. If you need to do this, you will first need to log out of the Desktop application. You can then edit the original connection. The Edit connection icon  does not display for the current connection.

Import a connection

Although the functionality is available to do so, it is not expected that Desktop users will create, edit, or delete their own connections. It is expected that this information will be provided to them by system administrators. However, because the connection configuration information is stored in their user settings, they will need to import the configuration file themselves. When rolling out Blue Prism Desktop to end users, it is recommended that system administrators create and distribute a centrally-controlled Desktop.User.config file to be imported by Desktop users.

Connection names must be unique, and are case-sensitive. If you import a connection with the same name as an existing one, it will overwrite the existing connection. You will not be asked to confirm the import.

1. On the Saved connections screen, click **Import connection** and navigate to the connection configuration import file.
2. Click **Open**.

The connection configuration file is uploaded. The connections configured in the file (there can be more than one per file) are added to the current user's list of saved connections. They can now select the required connection from the Welcome screen and log in.

Example Desktop.User.config file


The following example shows a typical Desktop.User.config file:


```
{
  "Environments": {
    "edadev2": {
      "ConfigurationName": "edadev2",
      "ApiUrl": "https://xxapi-edadev2.site.co.uk:12121",
      "DigitalWorkerApiUrl": "https://ttapi-dw-edadev2.site.co.uk:54441",
      "AuthenticationServerDomain": "ims-edadev2.bpdevops.co.uk",
      "ClientName": "bpd"
    },
    "ABC connect": {
      "ConfigurationName": "ABC connect",
      "ApiUrl": "https://xxapi-edadev2.site.co.uk:12634",
      "DigitalWorkerApiUrl": "https://uuapi-dw-edadev2.site.co.uk:54455",
      "AuthenticationServerDomain": "ims-edadev2.site.co.uk",
      "ClientName": "bpd"
    }
  },
  "Selected": "edadev2"
}
```

The connection name used in a Desktop connection configuration file must match the "ConfigurationName", as highlighted in the above example. If you create the connection using the Desktop application, these values will automatically match, however, this must be considered if editing the Desktop.User.config file directly.

To import a Desktop.User.config file that has been saved with a .txt extension, you will need to change the file type from **Custom Files** to **All Files** in order to make the text file available for import.

Delete a connection



 This action deletes the connection from your account and cannot be undone.

1. On the Saved connections screen, click the Delete connection icon .

A message displays asking you to confirm the delete.

2. Click **Yes, delete**.

The connection is deleted from the configuration and the Saved connections screen displays.

 You cannot delete the currently used connection from the Settings screen once logged into Desktop. If you need to do this, you will first need to log out and log back in using a different connection. You can then delete the original connection. The Delete connection icon  does not display for the current connection.


Blue Prism Desktop configuration


The following settings can be configured in your Blue Prism Desktop environment.

Change the limit for the number of items in a folder

The default setting for the maximum number of items that are available in a folder in the Desktop process library is 100. This limit can be amended if required.

1. Using a text editor, open the Web.config file for the Digital Worker API. The default location is C:\Program Files (x86)\Blue Prism Limited\Blue Prism Digital Worker API\Web.config.
2. Find `<add key="MaxItemsPerPageLibrary" value="100" />` and update the value as required.

 The minimum value for this setting is 1 and there is no maximum. However, it is recommended that implementation is taken into account if adjusting this value.



```
1 <?xml version="1.0" encoding="utf-8"?>
2 <!--
3 For more information on how to configure your ASP.NET application, please visit
4 https://go.microsoft.com/fwlink/?LinkId=301879
5 -->
6 <configuration>
7   <appSettings>
8     <clear />
9     <add key="webpages:Version" value="3.0.0.0" />
10    <add key="webpages:Enabled" value="false" />
11    <add key="ClientValidationEnabled" value="true" />
12    <add key="UnobtrusiveJavaScriptEnabled" value="true" />
13    <add key="DocumentProcessing.ResultQueue.Password" value="" />
14    <add key="MaxItemsPerPage" value="1000" />
15    <add key="SessionLogs.MaxResultTextLength" value="100" />
16    <add key="Authorization.Audience" value="bp-api"/>
17    <add key="Swagger.Enable" value="false" />
18    <add key="CreateWorkQueueItems.MaxRequestsInBatch" value="100" />
19    <add key="CreateWorkQueueItems.MaxStatusLength" value="255" />
20    <add key="CreateWorkQueueItems.MaxTagLength" value="255" />
21    <add key="ConnectionString" value="CONNECTION_NAME" />
22    <add key="ServerName" value="SERVER_NAME" />
23    <add key="DatabaseName" value="DATABASE_NAME" />
24    <add key="DatabaseUsername" value="DATABASE_USERNAME" />
25    <add key="DatabasePassword" value="DATABASE_PASSWORD" />
26    <add key="UsesWindowAuth" value="USE_WINDOWS_AUTH" />
27    <add key="BPUsername" value="BP_USERNAME" />
28    <add key="BPpassword" value="BP_PASSWORD" />
29    <add key="BPServerConfigName" value="Default"/>
30    <add key="MaxItemsPerPageLibrary" value="100" />
31  </appSettings>
32  <system.web>
33    <compilation debug="false" targetFramework="4.8" />
34    <httpRuntime targetFramework="4.8" />
35    <customErrors mode="RemoteOnly"></customErrors>
```

3. Save the changes to the Web.config file.