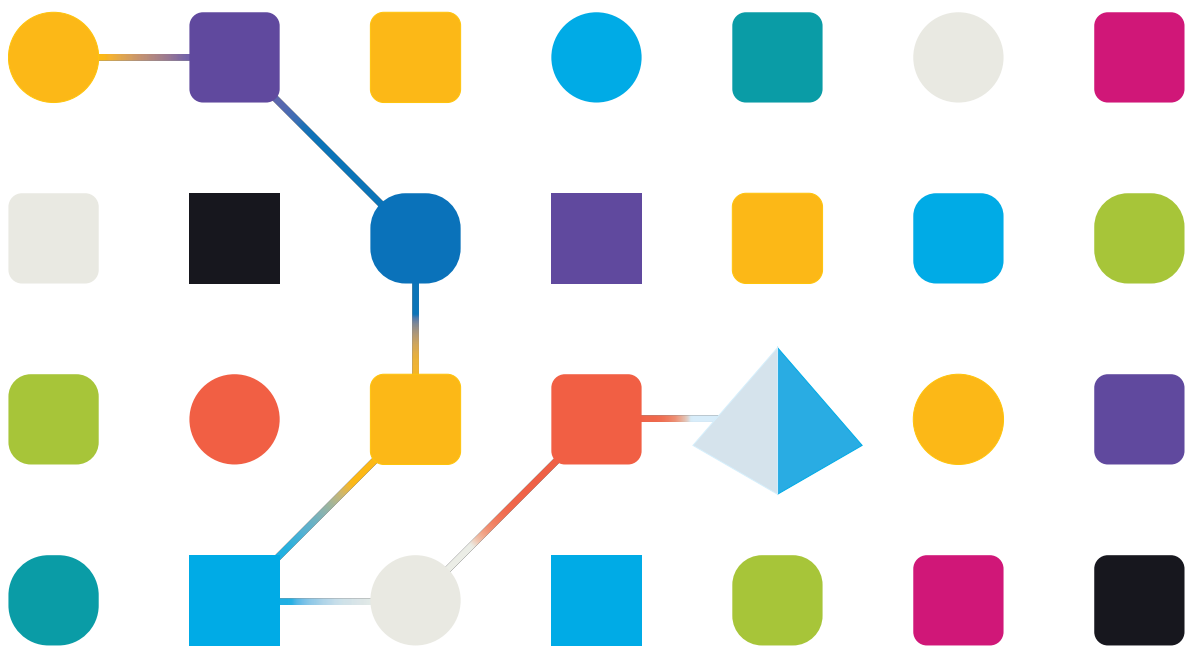




# Blue Prism Hub Control Room 5.0

Release Notes

Document Revision: 1.0



## Trademarks and Copyright

The information contained in this document is the proprietary and confidential information of Blue Prism Limited and should not be disclosed to a third-party without the written consent of an authorized Blue Prism representative. No part of this document may be reproduced or transmitted in any form or by any means, electronic or mechanical, including photocopying without the written permission of Blue Prism Limited.

### © Blue Prism Limited, 2001 – 2023

“Blue Prism”, the “Blue Prism” logo and Prism device are either trademarks or registered trademarks of Blue Prism Limited and its affiliates. All Rights Reserved.

All trademarks are hereby acknowledged and are used to the benefit of their respective owners. Blue Prism is not responsible for the content of external websites referenced by this document.

Blue Prism Limited, 2 Cinnamon Park, Crab Lane, Warrington, WA2 0XP, United Kingdom.  
Registered in England: Reg. No. 4260035. Tel: +44 370 879 3000. Web: [www.blueprism.com](http://www.blueprism.com)


# Contents

Release Notes .....	4
Control Room 5.0 – July 2023 .....	4

# Release Notes

## Control Room 5.0 – July 2023

This release note is for the 5.0 release of SS&C | Blue Prism Hub Control Room.

 SS&C | Blue Prism Hub Control Room 5.0 is only available in Blue Prism Cloud – it is not available as an on-premises solution. Please refer to the [roadmap](#) for more information on the planned versions of the Blue Prism Hub platform and the plugins.

### Known issues

A list of any prominent issues with this release is maintained in the knowledge base, click [here](#) for more information.

### Removal of the dependency between Hub and its plugins


Version 5.0 brings a fundamental change to the relationship between the individual plugins and Blue Prism Hub. Although Blue Prism Hub will continue to host the plugins, changes have been made to remove or reduce the level of dependency, with the view to enable installing and upgrading of future plugins without the need to upgrade the whole of Hub 5.0 and the other plugins.

For more information, see the [Blue Prism Hub release notes](#).


### Enhancements

The following new features and enhancements are introduced in this version of Control Room.

Area	Description of Change	Reference
Data Views	Custom table views have been improved to make it easier for users to create, load, and edit table views. The Save view option has been removed from all table headers, and two new options, <b>Save changes to view</b> and <b>Save as new view</b> , have been added to the Edit view panel. When <b>Save as new view</b> is selected, a dialog displays where users can configure the view name.	HUB-5730
Dashboard	The Monthly utilization diary dashboard widget has been updated to display all values to one decimal place. Previously, there was inconsistent use of decimals between data sets.	HUB-1469

Area	Description of Change	Reference
Digital Worker Health	<p>To support Blue PrismDesktop users, a new <b>Type</b> column has been added to the Digital Worker Health page, which indicates whether a digital worker was initiated from a Blue PrismDesktop or a Blue Prism Enterprise resource. The column shows a Desktop icon for Desktop digital workers, and is left blank for Enterprise resources.</p> <p>A <b>Digital worker type</b> filter has also been added, which allows users to filter Desktop or Enterprise workers.</p> <div data-bbox="395 584 1248 779" style="border: 1px solid #0070C0; padding: 5px; margin-top: 10px;"> <p> This functionality is only available if the environment has the following:</p> <ul style="list-style-type: none"> <li>• A valid and active Blue Prism Desktop 1.1 license.</li> <li>• Version 7.2 of the Blue Prism API.</li> </ul> </div>	HUB-5361 HUB-5358
Schedule Activity	<p>A new <b>Duration</b> column has been added to the Schedule Activity table, which enables users to see how long a schedule took to run. In addition, a <b>Duration</b> filter has been added, allowing users to filter and sort table data by schedule duration. For more information, see <a href="#">Schedule Activity</a>.</p>	HUB-4181 HUB-4182

Area	Description of Change	Reference
Schedule Manager	<p>To improve user experience, schedules and their associated tasks and sessions are now displayed in a nested list, where previously this detail could only be accessed in a separate pane. Schedules cards contain a tag that displays how many tasks or sessions are related to it, and can then be expanded to view the tasks and sessions in more detail. For more information, see <a href="#">Schedule Manager</a>.</p>	<p>HUB-4424 HUB-4425 HUB-4529</p>
	<p>Schedule management and configuration options no longer open in a new page, and now open in the right-hand pane of Schedule Manager. This enables users to configure all schedule options on the Schedule Manager page. The following options, accessed by clicking the ellipsis (...) icon on a schedule, task, or session, have been updated:</p> <ul style="list-style-type: none"> <li>• Clone</li> <li>• Edit</li> <li>• View schedule details</li> <li>• View task</li> <li>• Edit task</li> <li>• Add session</li> <li>• View session</li> <li>• Edit session</li> </ul> <p>For more information, see <a href="#">Schedule Manager</a>.</p>	<p>HUB-4489 HUB-4488 HUB-4426 HUB-4650 HUB-4536 HUB-4491 HUB-4492</p>
	<p>A new <b>Duration</b> column has been added when viewing the Schedule Activity panel for a selected schedule, which enables users to see how long a schedule took to run. In addition, a <b>Duration</b> filter has been added, allowing users to filter and sort table data by schedule duration. For more information, see <a href="#">Schedule Manager</a>.</p>	<p>HUB-4183 HUB-4184</p>
	<p>A delete icon has been added to the <b>Filter by schedule name</b> field, which enables users to easily remove the filter to see all available schedules. For more information, see <a href="#">Schedule Manager</a>.</p>	<p>HUB-5087</p>
	<p>When cloning schedules, the tooltip on the option to retire the existing schedule has been removed and replaced with helper text.</p>	<p>HUB-5595</p>
	<p>The layout and filter of the Schedule Manager page is now retained after the user navigates away from the page, refreshes the browser window, or logs out. The layout and filters are only reset if the local storage is deleted, or if a user manually enters a URL with different parameters.</p>	<p>HUB-4352</p>

Area	Description of Change	Reference
Sessions	The Session logs table has been updated to rename the Resource start column to <b>Digital worker start</b> .	HUB-3873
	<p>To support Blue PrismDesktop users, a new <b>Type</b> column has been added to the Sessions page, which indicates whether a session was initiated from a Blue PrismDesktop or a Blue Prism Enterprise system. The column shows a Desktop icon for Desktop sessions, and is left blank for Enterprise sessions.</p> <p>A <b>Type</b> filter has also been added, which allows users to filter Desktop or Enterprise sessions.</p> <div data-bbox="395 636 1248 828" style="border: 1px solid #0070C0; padding: 5px;"> <p> This functionality is only available if the environment has the following:</p> <ul style="list-style-type: none"> <li>• A valid and active Blue Prism Desktop 1.1 license.</li> <li>• Version 7.2 of the Blue Prism API.</li> </ul> </div>	HUB-5292 HUB-5359
Work Queues	<p>The following columns have been added to the Work Queue Items table to support Blue Prism Director users with performance metrics and SLA reporting. Users can filter and sort data using these categories:</p> <ul style="list-style-type: none"> <li>• <b>Process name</b> – The name of the process.</li> <li>• <b>SLA</b> – The service level agreement (SLA) for the work queue item. This is displayed in the format DD:HH:MM:SS.</li> <li>• <b>SLA deadline</b> – The date and time by which the item must be completed in order to meet the SLA. It is displayed in the format DD:MM:YYYY HH:MM:SS. If a work queue item is processed before this time, it is within the SLA.</li> <li>• <b>Within SLA</b> – Indicates if the work queue item was completed within the SLA.</li> <li>• <b>Director suggested</b> – If Director has recommended the queue item as the next best item to process.</li> </ul> <p>For more information, see <a href="#">Work Queues</a>.</p>	HUB-5807 HUB-5788

## Secure development policy

Blue Prism’s secure development process is a market-leading, embedded security culture, focused on delivering security excellence through four key principles:

- Education – Providing up-to-date knowledge, information, and training to the development team.
- Evaluation – Regular reviews of our products using industry standard frameworks and security tools.
- Elimination – Remove potential threats through the evaluation of standards, compliance, and performance.
- Evolution – Continued improvement of our security program, ensuring alignment with our product technologies and by reacting effectively to new and emerging threats.

Blue Prism secure development is based on OWASP ASVS, ISO 27034 and GDPR Article 25 standards and practices. For more information, see Blue Prism's [comprehensive secure development process](#).