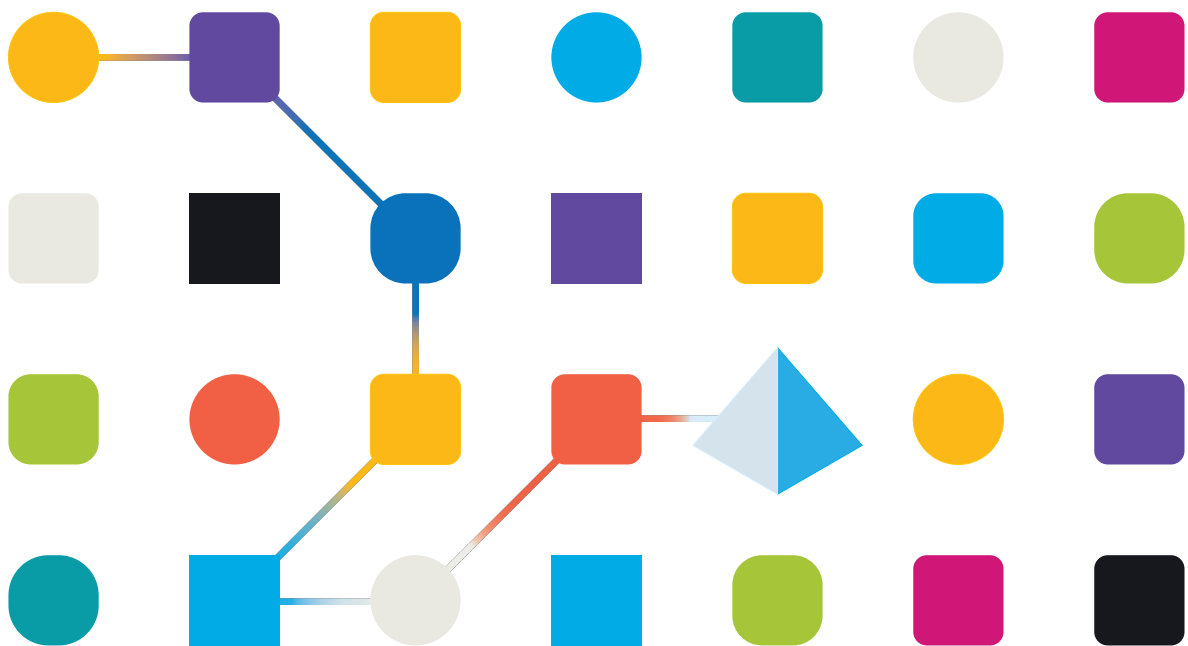




# Blue Prism Cloud 2021

## IADA.ai User Guide

Document Revision: 2.0



## Trademarks and Copyright

The information contained in this document is the proprietary and confidential information of Blue Prism Limited and should not be disclosed to a third-party without the written consent of an authorized Blue Prism representative. No part of this document may be reproduced or transmitted in any form or by any means, electronic or mechanical, including photocopying without the written permission of Blue Prism Limited.

### © Blue Prism Limited, 2001 – 2023

© “Blue Prism”, the “Blue Prism” logo and Prism device are either trademarks or registered trademarks of Blue Prism Limited and its affiliates. All Rights Reserved.

All trademarks are hereby acknowledged and are used to the benefit of their respective owners. Blue Prism is not responsible for the content of external websites referenced by this document.

Blue Prism Limited, 2 Cinnamon Park, Crab Lane, Warrington, WA2 0XP, United Kingdom.  
Registered in England: Reg. No. 4260035. Tel: +44 370 879 3000. Web: [www.blueprism.com](http://www.blueprism.com)

# Contents

- IADA.ai ..... 4
- Prerequisites ..... 5
  - Enter the credentials ..... 5
- Using the IADA.ai VBO ..... 7
  - Translate ..... 7
  - Detect ..... 9
  - Sentiment Analysis ..... 11
  - Extract Key Phrases ..... 14
  - Analyze Text ..... 16

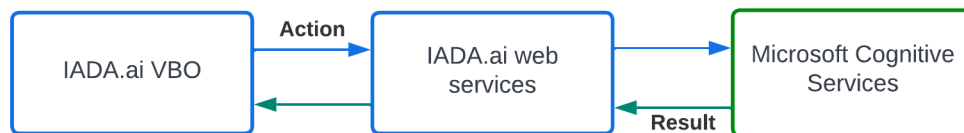
## IADA.ai


This document details how to utilize the Intelligent Automated Digital Assistant (IADA) Visual Business Object (VBO) – *IADA.ai*.

The IADA.ai VBO is available for use with Blue Prism Cloud and has the following Intelligent Automation Skills available:

- Language translation
- Sentiment analysis
- Language detection
- Text analysis
- Extraction of key phrases.


The IADA.ai VBO enables you to use the inbuilt actions to call the IADA.ai web services, which use Microsoft Cognitive Services, with the results being returned to your automation.



 IADA.ai resides within a centralized Blue Prism Cloud Microsoft Azure subscription which is external to any client or partner platform subscription.



3. Click **Next** and then enter your supplied credentials, for example:

 Credentials can be obtained from the Blue Prism Cloud Support team and are associated with the subscription service that Blue Prism Cloud provides.


4. Click **Next**.
5. Leave the timeout at the default value and click **Next**.

This will then start the service and check that the credentials are valid, for example:

6. Continue to click **Next** until you reach the final screen and then click **Finish**.
7. Repeat the credentials setting for the other service.

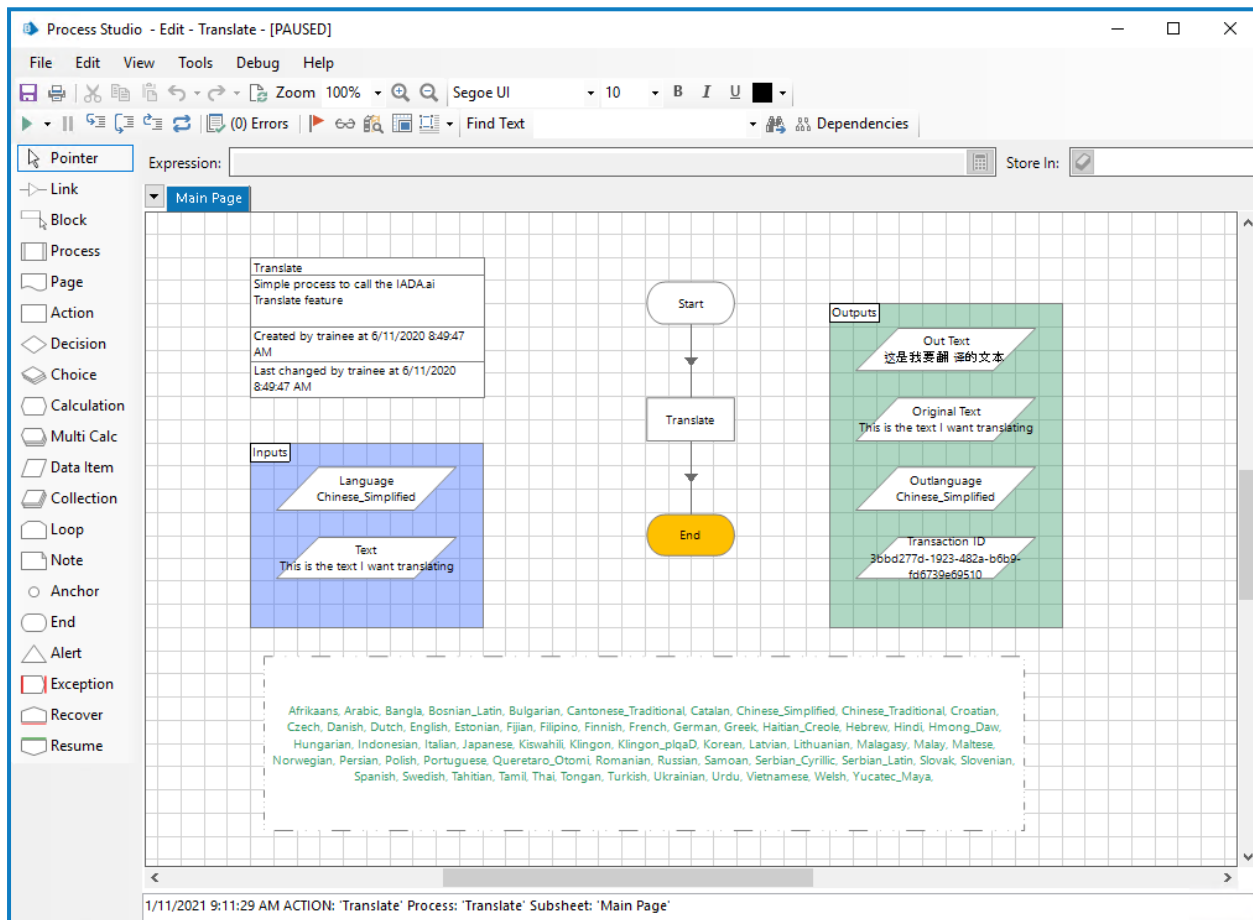
## Using the IADA.ai VBO

The Skills within the IADA.ai VBO can be called using an Action stage in an automation process. The examples below show the results from operating some of the IADA.ai skills.

 The Normalization skill is no longer supported due to the withdrawal of Microsoft's web service for this function.

### Translate

The image below shows a simple process calling the Translate skill from the business object Utility - IADA.AI, with the input and outputs shown. The note (in the image) below the process lists the available languages that can be used for translation.



In this example, the Translate action properties are set as follows:

Input

Action Properties

Name:

Description:

Business Object:

Action:

Group:

Page  Data Type

View All Items

Inputs   Outputs   Conditions

Name	Data Type	Value
Text to Translate	Text	[Text]
Target Language	Text	[Language]

Stage logging:   Don't log parameters on this stage

Warning threshold:  Number of minutes  (0 to disable)

Output

Action Properties

Name:

Description:

Business Object:

Action:

Group:

Page  Data Type

View All Items

Inputs   Outputs   Conditions

Name	Data Type	Store In
Transaction ID	Text	Transaction ID
Original Text	Text	Original Text
Target Language	Text	Outlanguage
Translation Result	Text	<input checked="" type="checkbox"/> Out Text

Stage logging:   Don't log parameters on this stage

Warning threshold:  Number of minutes  (0 to disable)



## Detect

The image below shows a simple process calling the Detect Languages skill from the business object Utility - IADA.AI, with the input and outputs shown. The collection properties show the detected languages and the certainty for the confidence that the detected language is correct.

The screenshot displays the Process Studio interface for a process named 'Detect'. The process flow starts with a 'Start' node, followed by a 'Detect' action, and ends with an 'End' node. The 'Detect' action has an input collection named 'Text' containing the text 'To jest tekst, który chce przetłumaczyć'. The output collection is named 'Detected Languages' and contains three rows of data:

Detected Languages - Row 1 of 1
Original Text To jest tekst, który chce przetłumaczyć
Transaction ID fc30ca6d-7db3-4ee5-9275-c101a331c9e3

The 'Collection Properties' window is open, showing the following details:

- Name: Detected Languages
- Description: (empty)
- Fields:
 

Fields	Initial Values	Current Values
Certainty (Number)		1
Language (Text)		Polish
- Rows: (empty)

In this example, the Detect action properties are set as follows:

Input

**Action Properties**

Name: Detect  
Description:

Business Object: Utility - IADA.AI  
Action: Detect Language

Group:  Page  Data Type

View All Items

Name	Data Type	Value
Text to Detect Language	Text	[Text]

Stage logging:  Enabled  Don't log parameters on this stage  
Warning threshold: System Default Number of minutes 5 (0 to disable)

OK Cancel

Output

**Action Properties**

Name: Detect  
Description:

Business Object: Utility - IADA.AI  
Action: Detect Language

Group:  Page  Data Type

View All Items

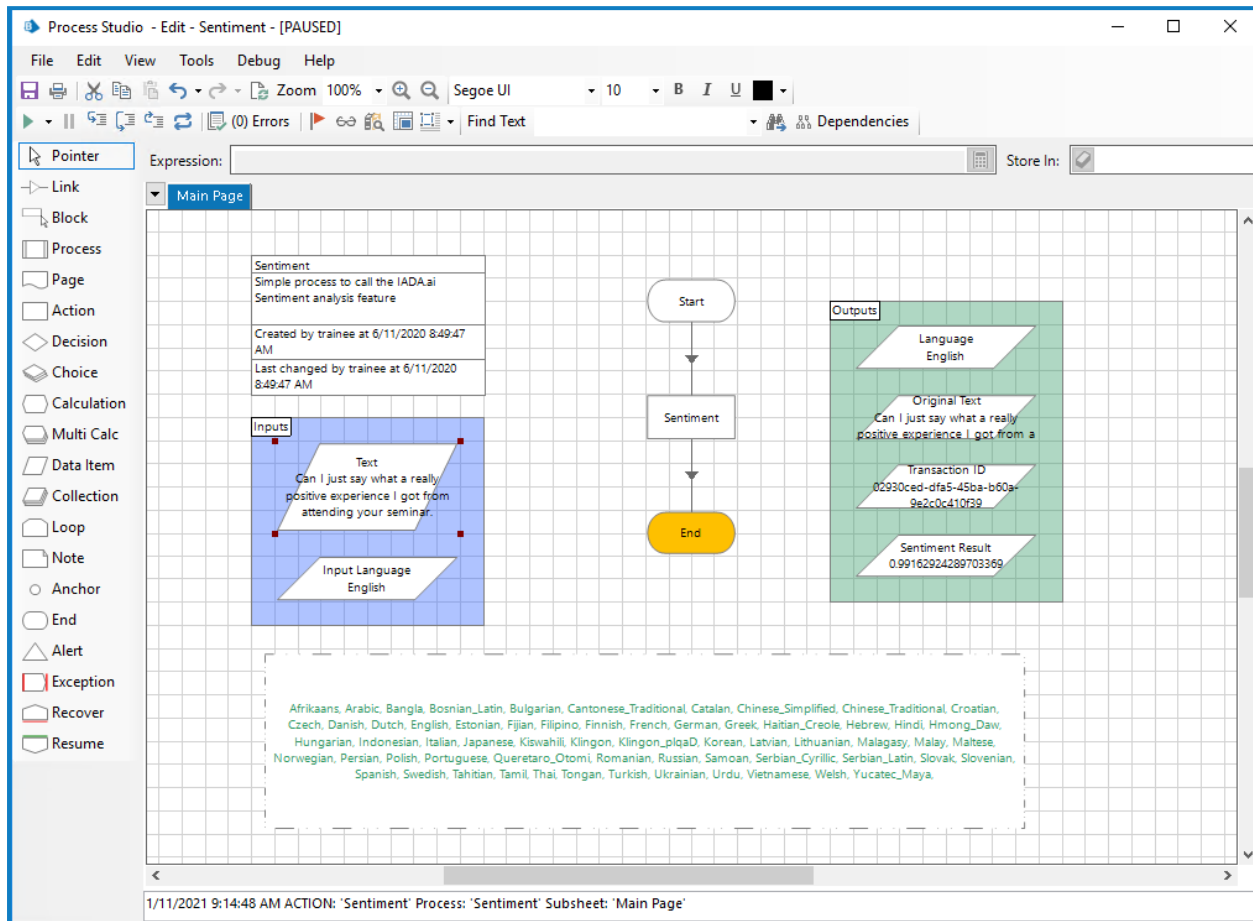
Name	Data Type	Store In
Transaction ID	Text	Transaction ID
Original Text	Text	Original Text
Detected Languages	Collection	<input checked="" type="checkbox"/> Detected Languages

Stage logging:  Enabled  Don't log parameters on this stage  
Warning threshold: System Default Number of minutes 5 (0 to disable)

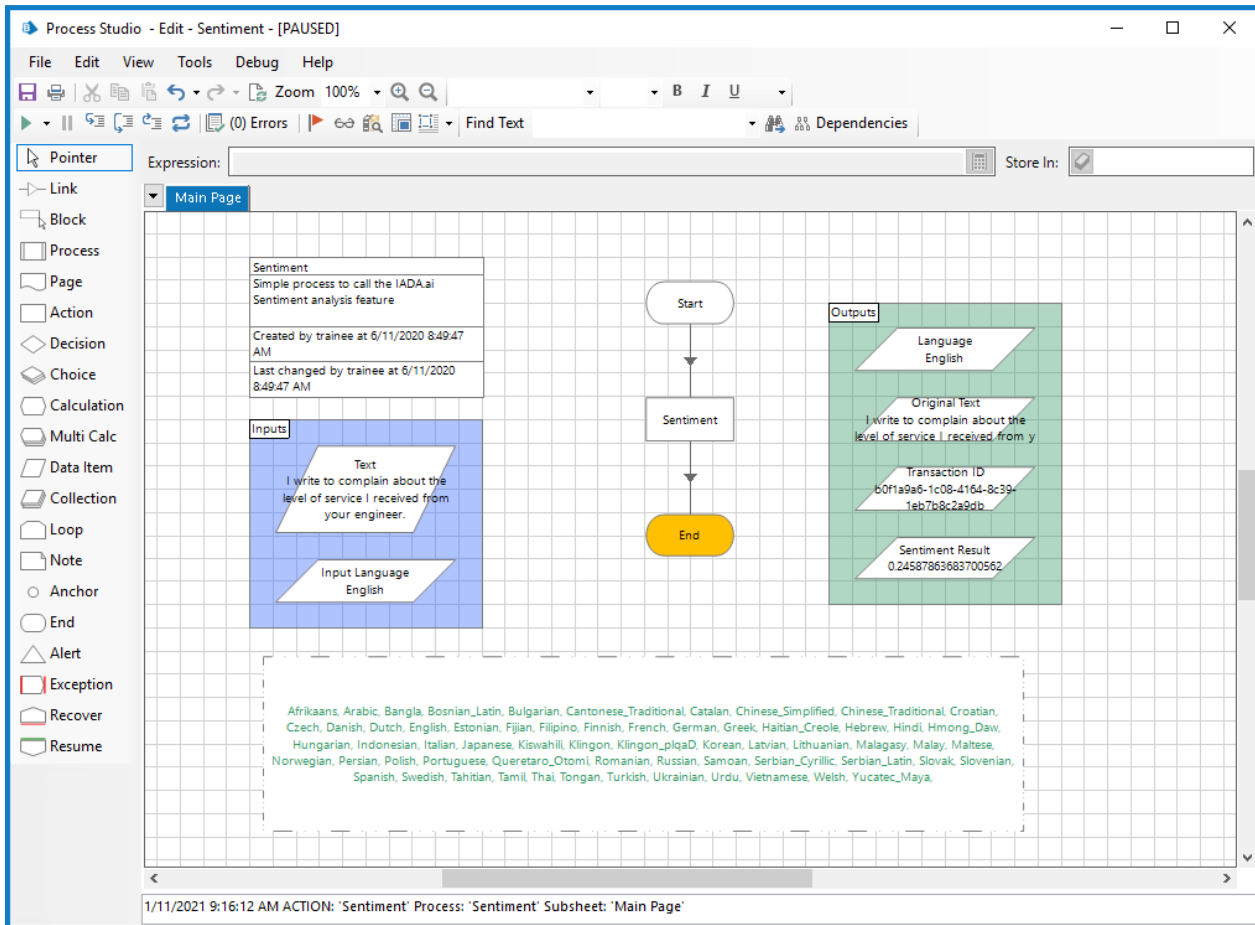
OK Cancel

## Sentiment Analysis

The two images below illustrate a simple process using the Sentiment Analysis skill from the business object Utility - IADA.AI. The first image illustrates a 'positive' statement:



The next image illustrates a 'negative' comment:



The Sentiment Analysis results in a 'sentiment' is closer to '1' when 'positive' and closer to '0' if 'negative'. In this example, the Sentiment action properties are set as follows:

Input

Action Properties

Name:

Description:

Business Object:

Action:

Inputs   Outputs   Conditions

Name	Data Type	Value
Text to Analyze Sentiment	Text	[Text]
Language of Text	Text	[Input Language]

Group:

Page    Data Type

View All Items

- Binaries
- Collections
- Dates
- DateTimes
- Flags
- Images
- Numbers
- Passwords
- Text
- Times
- TimeSpans

Stage logging:   Don't log parameters on this stage

Warning threshold:  Number of minutes  (0 to disable)

Output

? - □ ×
Action Properties

Name:   
 Description:

Business Object:  ⓘ  
 Action:

Group:  
 Page  Data Type  
 View All Items

Inputs | Outputs | Conditions

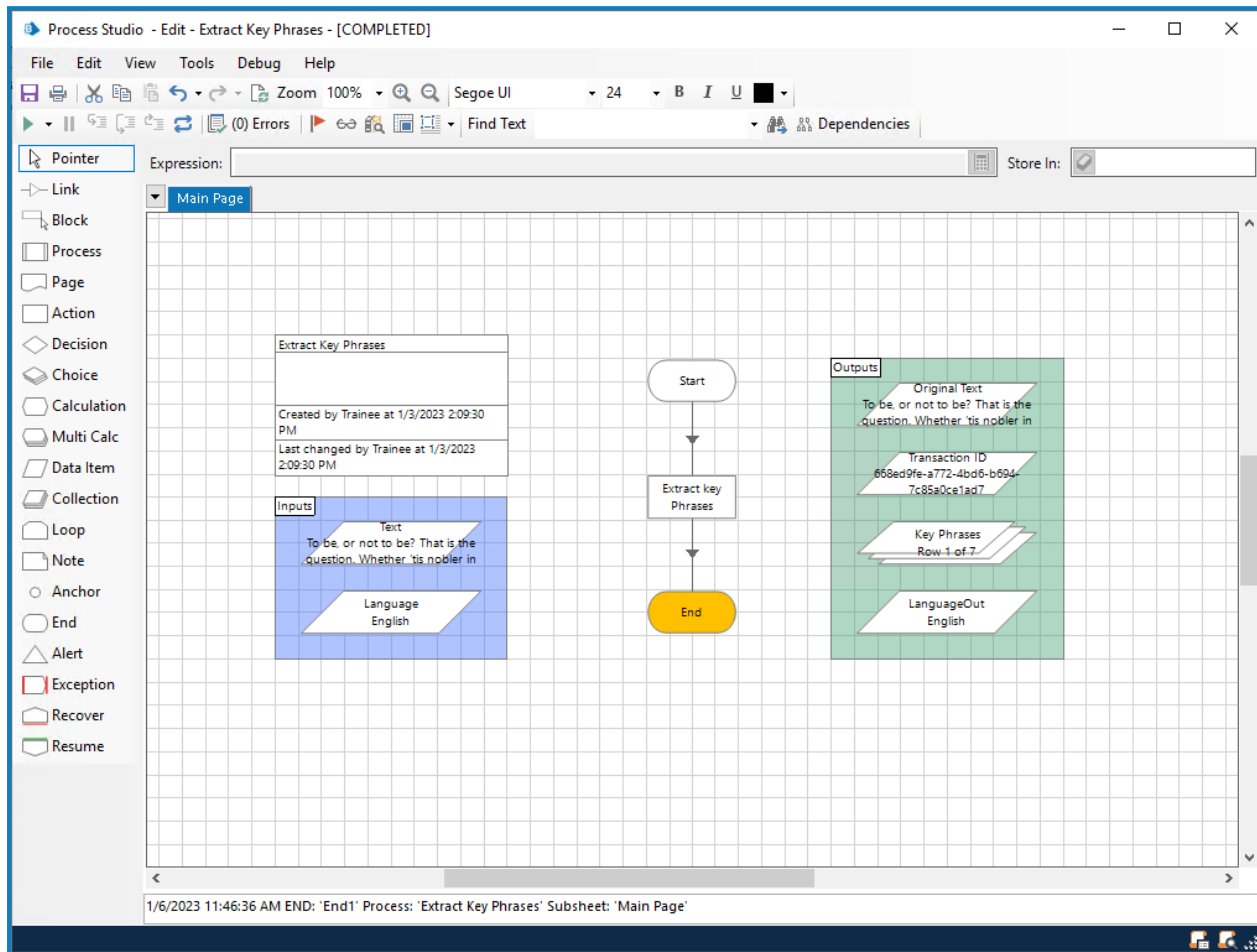
Name	Data Type	Store In
Transaction ID	Text	Transaction ID
Original Text	Text	Original Text
Language	Text	Language
Sentiment Result	Number	<input checked="" type="checkbox"/> Sentiment Result

Stage logging:   Don't log parameters on this stage  
 Warning threshold:  Number of minutes  (0 to disable)

- Binaries
- Collections
- Dates
- DateTimes
- Flags
- Images
- Numbers
- Passwords
- Text
- Times
- TimeSpans

## Extract Key Phrases

The image below shows a simple process call the Extract Key Phrases skill from the business object Utility - IADA.AI.



In this example, the Extract Key Phrases action properties are set as follows:

Input

**Action Properties**

Name:

Description:

Business Object:

Action:

Group:  Page  Data Type

View All Items

Name	Data Type	Value
Text to Extract From	Text	[Text]
Language of Text	Text	[Language]

Stage logging:   Don't log parameters on this stage

Warning threshold:  Number of minutes  (0 to disable)

Output

**Action Properties**

Name:

Description:

Business Object:

Action:

Group:  Page  Data Type

View All Items

Name	Data Type	Store In
Transaction ID	Text	Transaction ID
Original Text	Text	Original Text
Key Phrases	Collection	Key Phrases
Language	Text	<input checked="" type="checkbox"/> LanguageOut

Stage logging:   Don't log parameters on this stage

Warning threshold:  Number of minutes  (0 to disable)

## Analyze Text

The image below shows a simple process calling the Analyze Text skill from the business object Utility - IADA.AI, which produces multiple outputs. Analyze Text combines several skills to produce its output.

The screenshot shows a Process Studio window titled "Process Studio - Edit - Analysis - [PAUSED]". The main workspace displays a process flow starting with a "Start" node, followed by an "Analyze" action, and ending with an "End" node. The "Analyze" action is connected to an "Inputs" collection and an "Outputs" collection.

The "Inputs" collection contains a "Text" field with the value: "To be, or not to be? That is the question. Whether 'tis nobler in the mind to suffer the slings and arrows of outrageous fortune, or to take arms against a sea of troubles, and, by opposing, end them?".

The "Outputs" collection contains several fields: "Detected Languages" (Row 1 of 1), "Original Text" (To be, or not to be? That is the question. Whether 'tis nobler in the mind to suffer the slings and arrows of outrageous fortune, or to take arms against a sea of troubles, and, by opposing, end them?), "Transaction ID" (8fe76409-7ce6-44a3-8f3b-7dffc2b496e), "Key Phrases" (Row 1 of 7), and "Sentiment" (0.23526746034622192).

Two "Collection Properties" windows are open. The first window, titled "Collection Properties", shows the properties for the "Detected Languages" collection. The second window, also titled "Collection Properties", shows the properties for the "Key Phrases" collection. The "Key Phrases" window displays a table with the following data:

Fields	Initial Values	Current Values
Certainty (Number)	Language (Text)	
1	English	

The "Key Phrases" window also displays a list of phrases: arms, mind, slings, arrows of outrageous fortu..., sea of troubles, tis nobler, and question.



In this example, the Analyze Text action properties are set as follows:

Input

**Action Properties**

Name:

Description:

Business Object:

Action:

Group:  Page  Data Type

View All Items

Name	Data Type	Value
Text to Analyze	Text	[Text]

Binaries: Collections, Dates, DateTimes, Flags, Images, Numbers, Passwords, Text, Times, TimeSpans

Stage logging:  Enabled  Don't log parameters on this stage

Warning threshold:  Number of minutes:  (0 to disable)

Output

**Action Properties**

Name:

Description:

Business Object:

Action:

Group:  Page  Data Type

View All Items

Name	Data Type	Store In
Transaction ID	Text	Transaction ID
Original Text	Text	Original Text
Detected Languages	Collection	Detected Languages
Key Phrases	Collection	Key Phrases
Sentiment	Number	<input checked="" type="checkbox"/> Sentiment

Binaries: Collections, Dates, DateTimes, Flags, Images, Numbers, Passwords, Text, Times, TimeSpans

Stage logging:  Enabled  Don't log parameters on this stage

Warning threshold:  Number of minutes:  (0 to disable)